

PIT OUTLINE (6" +0.5"/-0.0" DEPTH)

STERILIZER MODEL	A	B
GR 9-6-9 HS2	43 1/4"	59"
GR 9-6-12 HS2	55"	70 3/4"
GR 9-6-15 HS2	67"	82 1/2"
GR 9-6-18 HS2	78 3/4"	94 1/2"

# Belimed

Infection Control

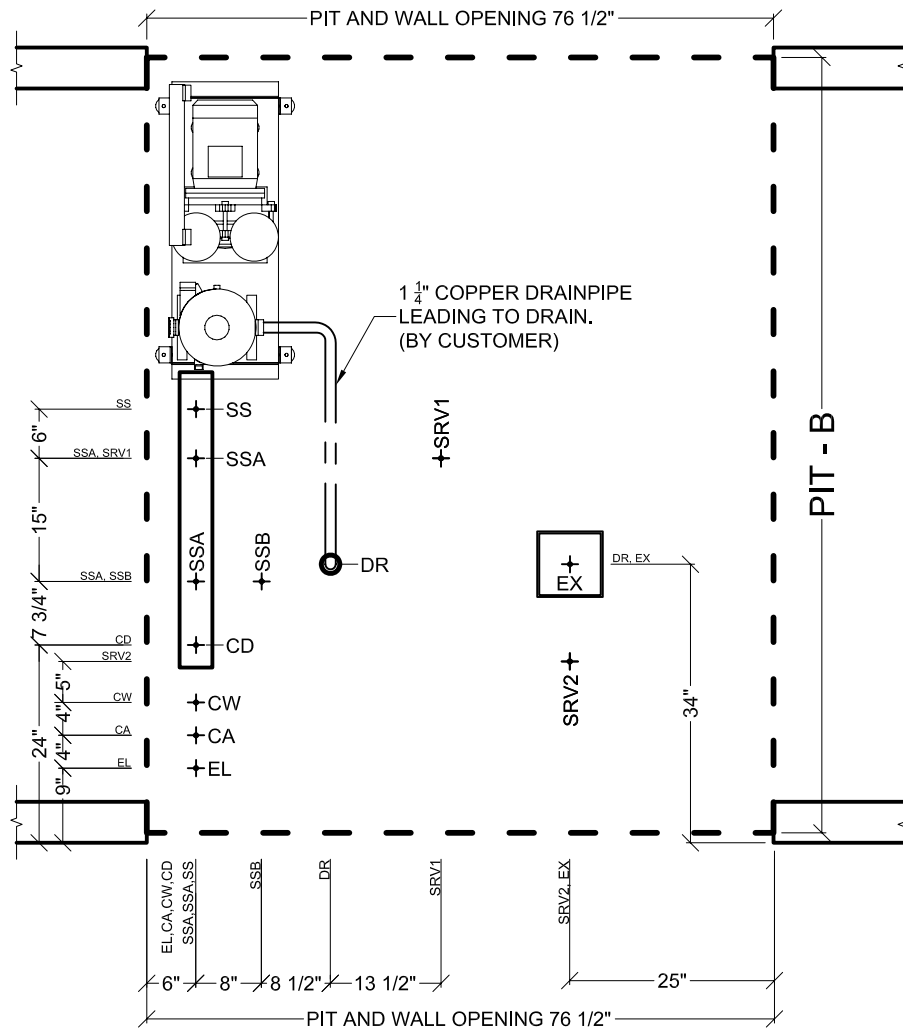
14301 S.W. 119 Avenue - Miami, FL 33186-6006  
 (305) 252-3338 - Fax: (305) 234-1115  
 E-mail: home@belimedusa.com

## BELIMED STERILIZER

DOUBLE DOOR, FLOOR LOADER

Dwg. No. : MST-H_GR2-T-Dwg_CoC#_7	Date : 12/15/05	Scale : 1/2" = 1'	Revision :
Top view of sterilizer.		CAD Operator : NG	7
Pages : 1 of 9	EQUIPMENT TOP VIEW		

EL	ELECTRIC CONNECTION
EX	EXHAUST
CA	COMPRESSED AIR
CD	CONDENSATE
CW	COLD WATER
DR	DRAIN
SS	STEAM SUPPLY
SSA	MANIFOLD STEAM OUT
SSB	STERILIZER STEAM IN
SRV1	SAFETY VALVE CONNECTION
SRV2	SAFETY VALVE CONNECTION



PIT OUTLINE (6" +0.5"/-0.0" DEPTH)

STERILIZER MODEL	B
GR 9-6-9 HS2	59"
GR 9-6-12 HS2	70 3/4"
GR 9-6-15 HS2	82 1/2"
GR 9-6-18 HS2	94 1/2"

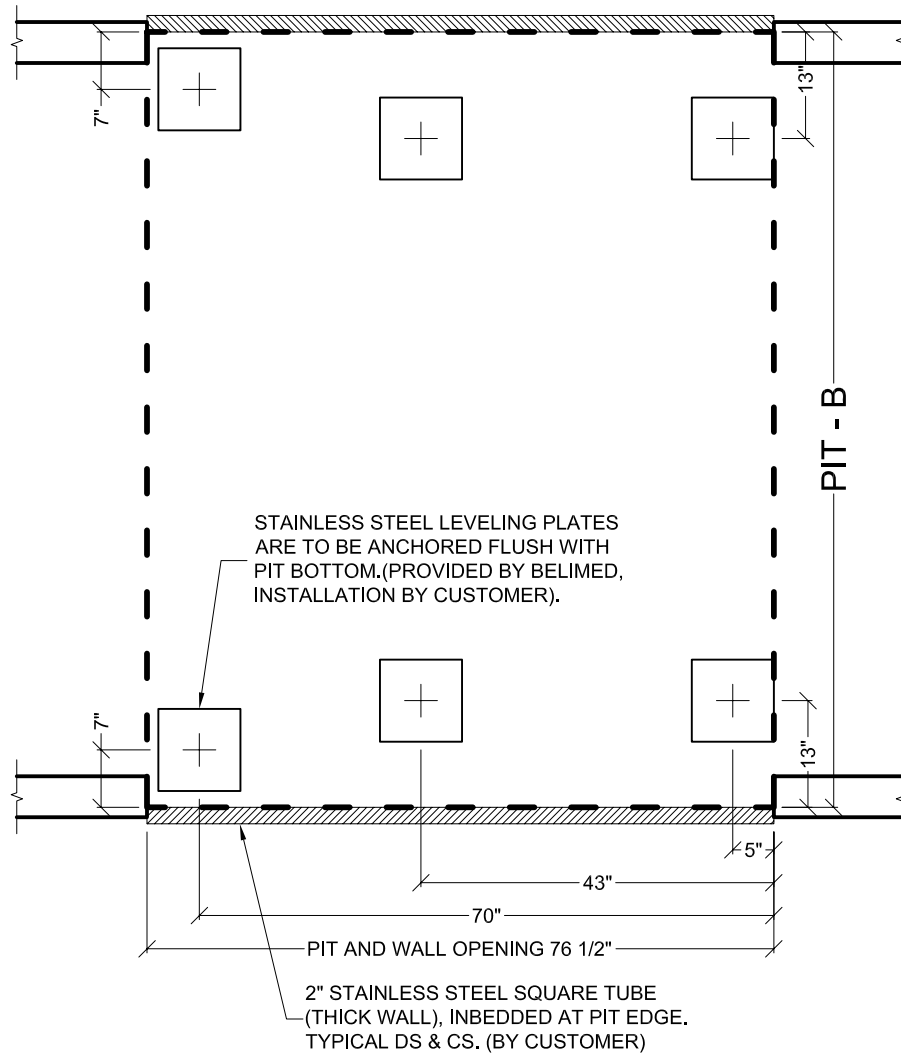
**Belimed**  
Infection Control

14301 S.W. 119 Avenue - Miami, FL 33186-6006  
(305) 252-3338 - Fax: (305) 234-1115  
E-mail: home@belimedusa.com

# BELIMED STERILIZER

DOUBLE DOOR, FLOOR LOADER

Dwg. No. : MST-H_GR2-T-Dwg_CoC#_7	Date : 12/15/05	Scale : 1/2" = 1'	Revision :
Top view of site preparation for sterilizer. (Load and unload modules not shown)		CAD Operator : NG	7
Pages : 2 of 9		SITE PREPARATION TOP VIEW	




 PIT OUTLINE (6" +0.5"/-0.0" DEPTH)

STERILIZER MODEL	B
GR 9-6-9 HS2	59"
GR 9-6-12 HS2	70 3/4"
GR 9-6-15 HS2	82 1/2"
GR 9-6-18 HS2	94 1/2"

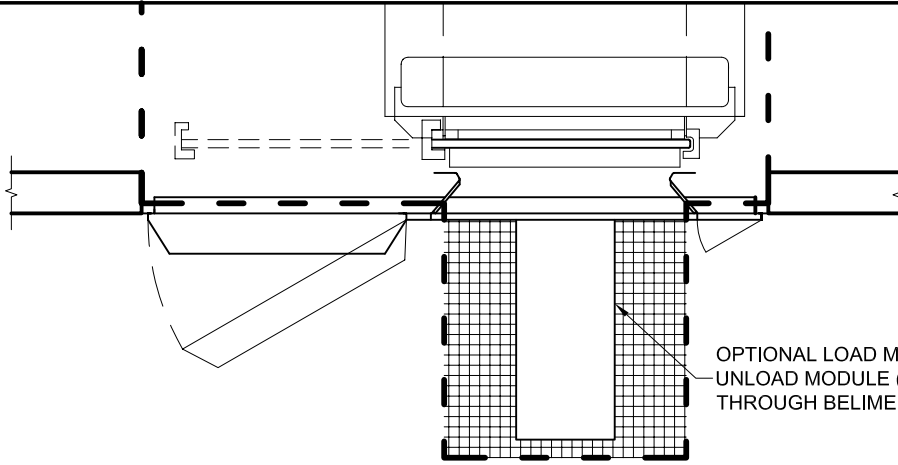
**Belimed**  
 Infection Control

14301 S.W. 119 Avenue - Miami, FL 33186-6006  
 (305) 252-3338 - Fax: (305) 234-1115  
 E-mail: home@belimedusa.com

# BELIMED STERILIZER

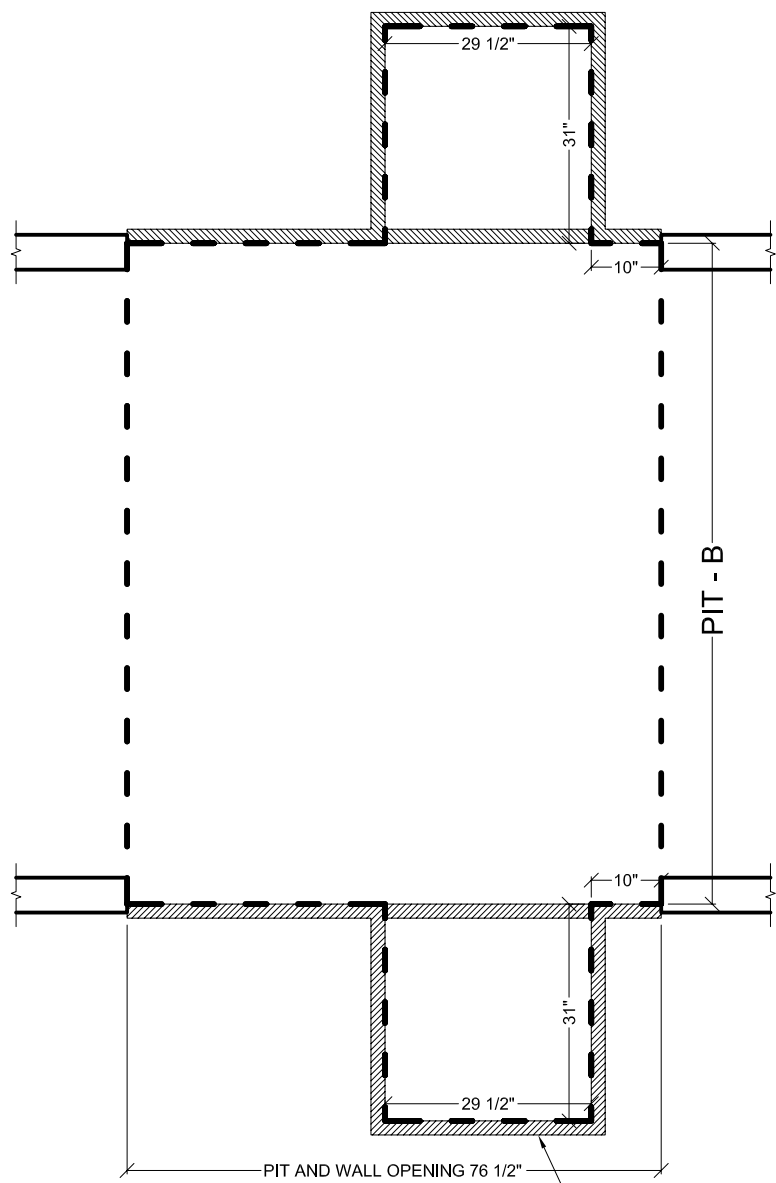
DOUBLE DOOR, FLOOR LOADER

Dwg. No. : MST-H_GR2-T-Dwg_CoC#_7	Date : 12/15/05	Scale : 1/2" = 1'	Revision :
Top view of pit details for sterilizer.		CAD Operator : NG	7
Load and unload modules not shown.		Pages : 3 of 9	PIT DETAIL



TOP VIEW OF LOAD MODULE

STERILIZER MODEL	B
GR 9-6-9 HS2	59"
GR 9-6-12 HS2	70 3/4"
GR 9-6-15 HS2	82 1/2"
GR 9-6-18 HS2	94 1/2"



PIT OUTLINE (6" +0.5"/-0.0" DEPTH)

2" STAINLESS STEEL SQUARE TUBE FRAME (PROVIDED BY BELIMED), INBEDDED AT PIT EDGE, (BY CUSTOMER). TYPICAL DS & CS.



Infection Control

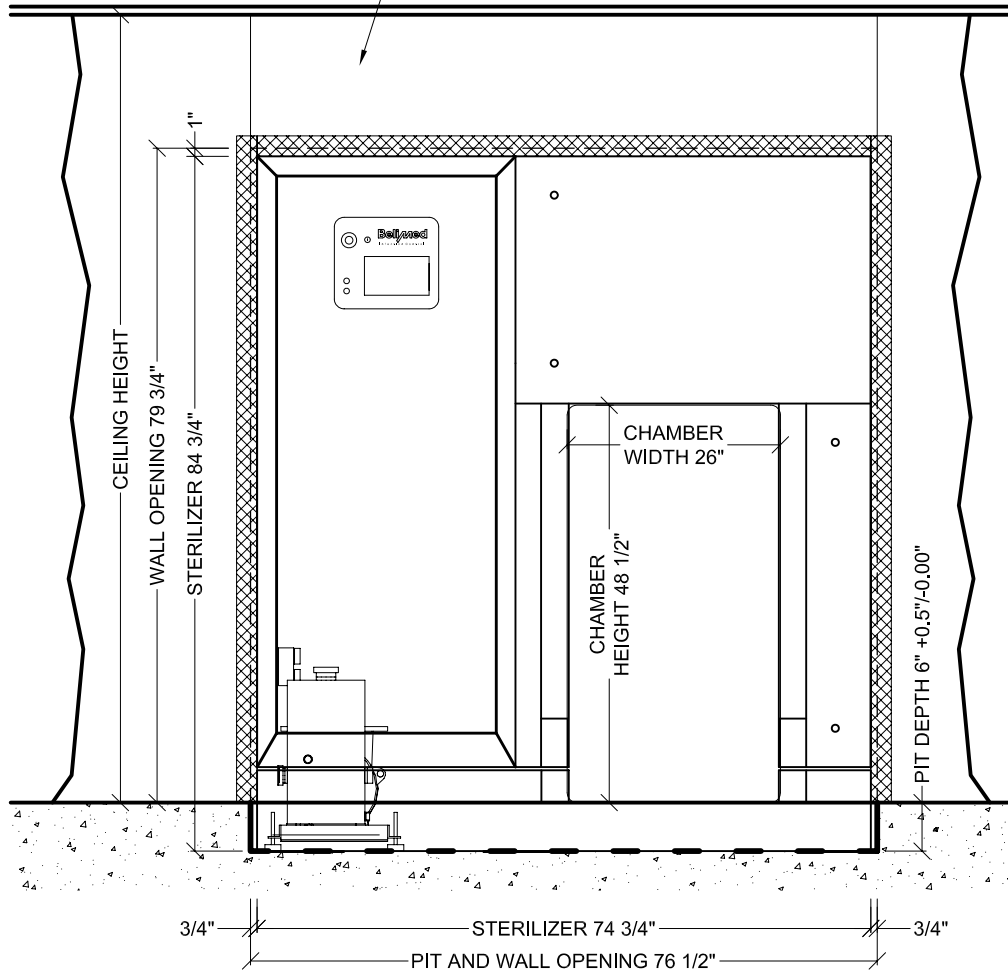
14301 S.W. 119 Avenue - Miami, FL 33186-6006  
 (305) 252-3338 - Fax: (305) 234-1115  
 E-mail: home@belimedusa.com

# BELIMED STERILIZER

DOUBLE DOOR, FLOOR LOADER

Dwg. No. : MST-H_GR2-T-Dwg_CoC#_7	Date : 12/15/05	Scale : 3/8" = 1'	Revision :
Top view of pit details for sterilizer with the optional addition of the load and unload modules.		CAD Operator : NG	7
Pages : 4 of 9		PIT DETAIL FOR MODULE	

WALL SECTION DIRECTLY ABOVE OPENING, CAN BE SUBSTITUTED WITH A STAINLESS STEEL PANEL. (PANEL IS AVAILABLE THROUGH BELIMED AT AN ADDITIONAL COST).



PIT OUTLINE (6" +0.5"/-0.0" DEPTH)



OPTIONAL STAINLESS STEEL TRIM.

# Belimed

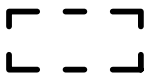
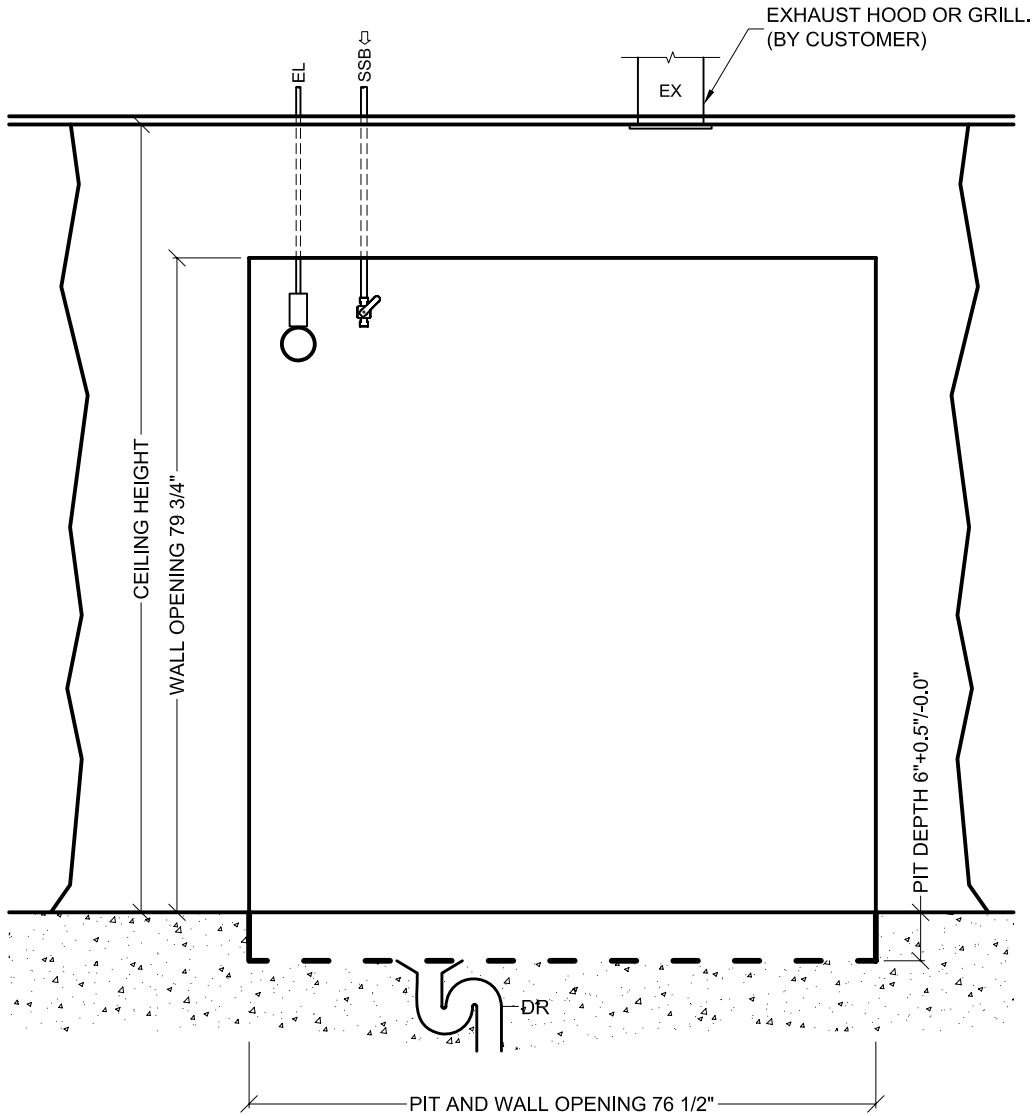
Infection Control

14301 S.W. 119 Avenue - Miami, FL 33186-6006  
 (305) 252-3338 - Fax: (305) 234-1115  
 E-mail: home@belimedusa.com

## BELIMED STERILIZER

DOUBLE DOOR, FLOOR LOADER

Dwg. No. : MST-H_GR2-T-Dwg_CoC#_7	Date : 12/15/05	Scale : 1/2" = 1'	Revision :
Front view of sterilizer. (Load and unload modules not shown).		CAD Operator : NG	7
		Pages : 5 of 9	FRONT EQUIPMENT VIEW



PIT OUTLINE (6" +0.5"/-0.0" DEPTH)

**Belimed**

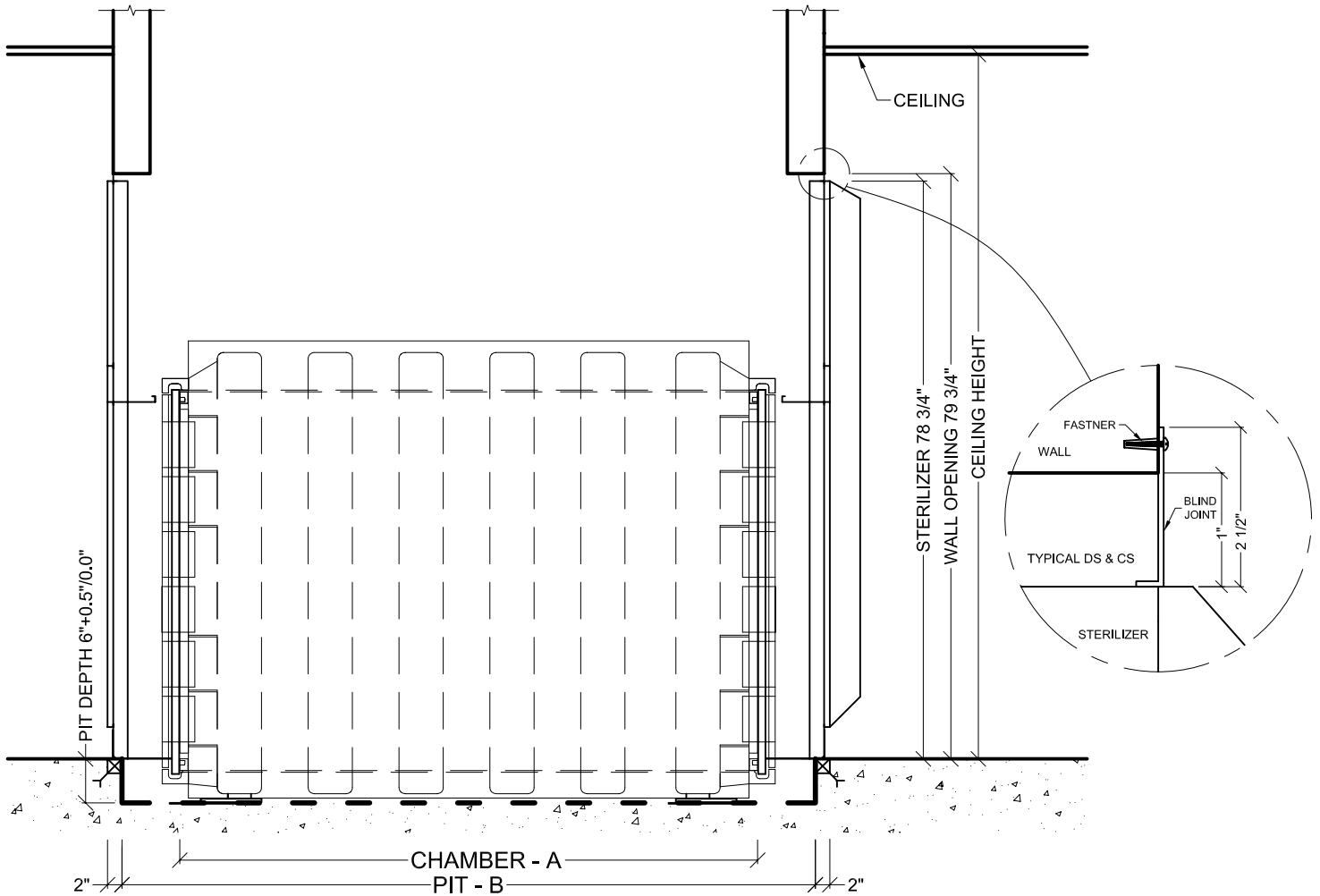
Infection Control

14301 S.W. 119 Avenue - Miami, FL 33186-6006  
 (305) 252-3338 - Fax: (305) 234-1115  
 E-mail: home@belimedusa.com

**BELIMED STERILIZER**

DOUBLE DOOR, FLOOR LOADER

Dwg. No. : MST-H_GR2-T-Dwg_CoC#_7	Date : 12/15/05	Scale : 1/2" = 1'	Revision :
Front view of site preparation for sterilizer. (Load and unload modules not shown).		CAD Operator : NG	7
Pages : 6 of 9		FRONT VIEW	



  
 PIT OUTLINE (6" +0.5"/-0.0" DEPTH)

STERILIZER MODEL	A	B
GR 9-6-9 HS2	43 1/4"	59"
GR 9-6-12 HS2	55"	70 3/4"
GR 9-6-15 HS2	67"	82 1/2"
GR 9-6-18 HS2	78 3/4"	94 1/2"

# Belimed

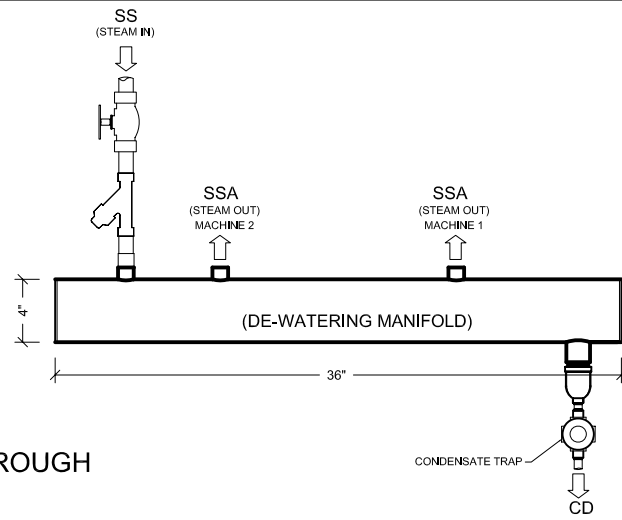
Infection Control

14301 S.W. 119 Avenue - Miami, FL 33186-6006  
 (305) 252-3338 - Fax: (305) 234-1115  
 E-mail: home@belimedusa.com

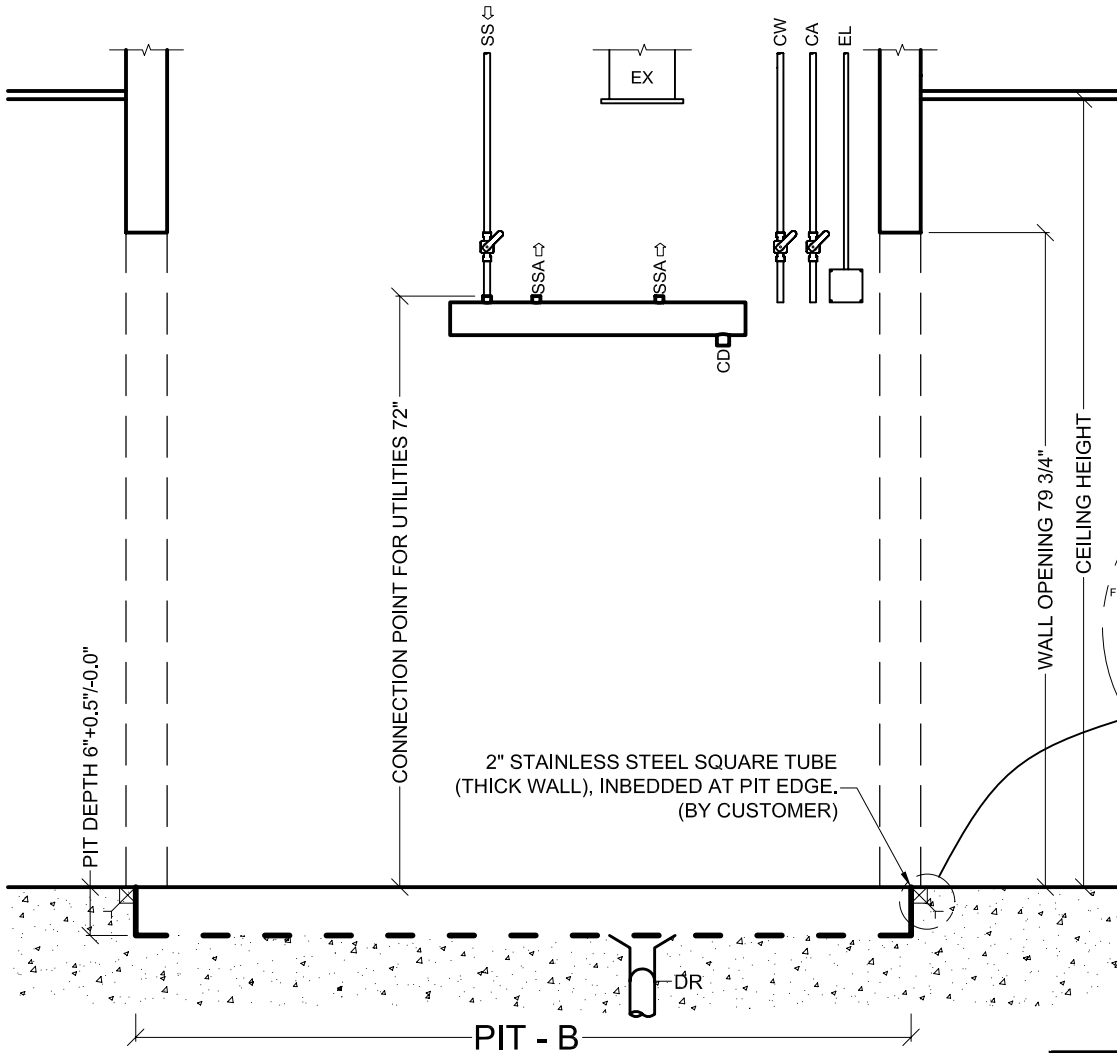
## BELIMED STERILIZER

DOUBLE DOOR, FLOOR LOADER

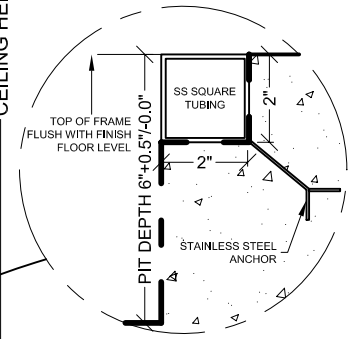
Dwg. No. : MST-H_GR2-T-Dwg_CoC#_7	Date : 12/15/05	Scale : 1/2" = 1'	Revision : 7
Side view of sterilizer. (Load and unload modules not shown).		CAD Operator : NG	
Pages : 7 of 9		EQUIPMENT SIDE VIEW	



STEAM MANIFOLD IS AVAILABLE THROUGH BELIMED AT AN ADDITIONAL COST.



EL	ELECTRIC CONNECTION
EX	EXHAUST
CA	COMPRESSED AIR
CD	CONDENSATE
CW	COLD WATER
DR	DRAIN
SS	STEAM SUPPLY
SSA	MANIFOLD STEAM OUT



STERILIZER MODEL	B
GR 9-6-9 HS2	59"
GR 9-6-12 HS2	70 3/4"
GR 9-6-15 HS2	82 1/2"
GR 9-6-18 HS2	94 1/2"

PIT OUTLINE (6" +0.5"/-0.0" DEPTH)

**Belimed**

Infection Control

14301 S.W. 119 Avenue - Miami, FL 33186-6006  
 (305) 252-3338 - Fax: (305) 234-1115  
 E-mail: home@belimedusa.com

**BELIMED STERILIZER**

DOUBLE DOOR, FLOOR LOADER

Dwg. No. : MST-H_GR2-T-Dwg_CoC#_7	Date : 12/15/05	Scale : 1/2" = 1'	Revision : 7
Side view of site preparation for sterilizer. (Load and unload modules not shown).		CAD Operator : NG	
Pages : 8 of 9		SIDE VIEW	

**GR ( 9-6-9 , 9-6-12 , 9-6-15 , 9-6-18 ) HS1/HS2 STERILIZERS - TECHNICAL DATA**

Ref.	Utility	Connection				Type	Pressure				units	Peak Consumption*				units	Consumption/Load*				units
		9-6-9	9-6-12	9-6-15	9-6-18		9-6-9	9-6-12	9-6-15	9-6-18		9-6-9	9-6-12	9-6-15	9-6-18		9-6-9	9-6-12	9-6-15	9-6-18	
SS	Steam supply	1 1/4"	1 1/2"			NPT	40-50				PSIG	4.4	5.7	7	8.6	lb/min	66	88	110	132	lb
CW	Cold Water	3/4"	1"				30-70					8.8	11	13.2		gal/min	93	119	159	185	gal
CA	Compressed Air	1/4"					70-100					0.28				CFM	17				ft <sup>3</sup>
EL	Electric Supply	4x4 junction box w/ receptacle									2.5	3.4			kW	1.2		1.7		kWh	
DR	Open Drain	Indirect drain									9.2	12	17		gal/min	101	130	172	201	gal	
CD	Condensate	3/4"				NPT															

Optional utilities for chilled water cooling (used for reduction of cold water consumption).

CS	Chilled Water supply	1 1/4"				NPT	30-70				PSIG	17	22	26	gal/min	63k	82k	107k	119k	BTU
CR	Chilled Water Return	1 1/4"																		
CW	Cold Water	3/4"	1"				30-70				PSIG	4.4			gal/min	2.6				gal

Carry-in Dimensions	9-6-9	9-6-12	9-6-15	9-6-18	units
Height	66.5	66.5	66.5	66.5	in.
Width	46.5	46.5	46.5	46.5	
Length	51.5	61.8	73.5	85.5	

Weights	9-6-9 HS1	9-6-12 HS1	9-6-15 HS1	9-6-18 HS1	units	9-6-9 HS2	9-6-12 HS2	9-6-15 HS2	9-6-18 HS2	units
Transport	2425	2870	3310	3530	lb	3200	3530	3860	4300	
Operating	4190	4630	6395	5300		4960	5295	5625	6070	
Test	6615	7720	8820	9590		7385	8380	9855	10370	

Utility Notes (Requirements per sterilizer):

SS	Steam supply	Steam must be dry, saturated, free from all impurities such as gases, oil, dirt, or other contaminants. Provide adequate steam strainer typical for sterilizers. All steam drops must be piped from top of steam supply line.
CW	Cold Water	Cold water is used to prime the vacuum pump and cool the condensate. Colder water temperatures will result in less water consumption. Water should be softened to 0-60 ppm. Use sediment filter similar to <i>Grainger</i> part No.4BA87.
CA	Compressed Air	Air must be dry and oil free. Used to operate pneumatic control system.
EL	Electric Supply	9-6-9 and 9-6-12: 3-Phase ; 208 V ; 60 Hz ; Provide 20 A circuit protection with receptacle: NEMA 15-20R 9-6-15 and 9-6-18: 3-Phase ; 208 V ; 60 Hz ; Provide 30 A circuit protection with receptacle: NEMA 15-30R
DR	Open Drain	Provide floor drain and trap.
CD	Condensate	Condensate removal by customer as per local code.
EX	Equipment Area Exhaust	Provide sufficient air exhaust to remove 1 kW heat rejection for (9-6-9 and 9-6-12) or 4.5 kW heat rejection for (9-6-15 and 9-6-18).
CS	Chilled Water Supply (Optional)	Feed water at ~50°F with a temperature difference ΔT of 15 K.
CR	Chilled Water Return (Optional)	Pressure difference ΔP CS/CR must be greater than 7 PSIG.
SRV1	Safety Pressure Relief Valve (chamber)	Provide connection to safety relief valve and pipe to drain, atmosphere, or as required by local code. Outlet size = 1 1/2" FNPT.
SRV2	Safety Pressure Relief Valve (jacket)	Provide connection to safety relief valve and pipe to drain, atmosphere, or as required by local code. Outlet size = 1" FNPT.

\*Consumptions calculated under Pre-vac cycle at 270°F and water temperature of 68°F.

28-Nov-05

Additional Information:

- NPT = Male pipe thread
- FNPT = Female pipe thread
- Customer must provide service valves and strainers for steam and water supply.
- For alternate utility connections, please contact Belimed
- All utility supplies and connections are customer's responsibility.
- Left or right side chamber is available.



Technical Drawing CoC: CoC#  
 Technical Drawing: CoC#\_x  
 Technical Data: CoC#\_A  
 Cutsheet: CoC#\_Ax