

STERILIZER MODEL	A	B
9-6-9 HS1	50 1/2"	41"
9-6-12 HS1	64 1/2"	55"
9-6-15 HS1	76 1/2"	67"
9-6-18 HS1	88 1/4"	78 3/4"

Belimed
Infection Control

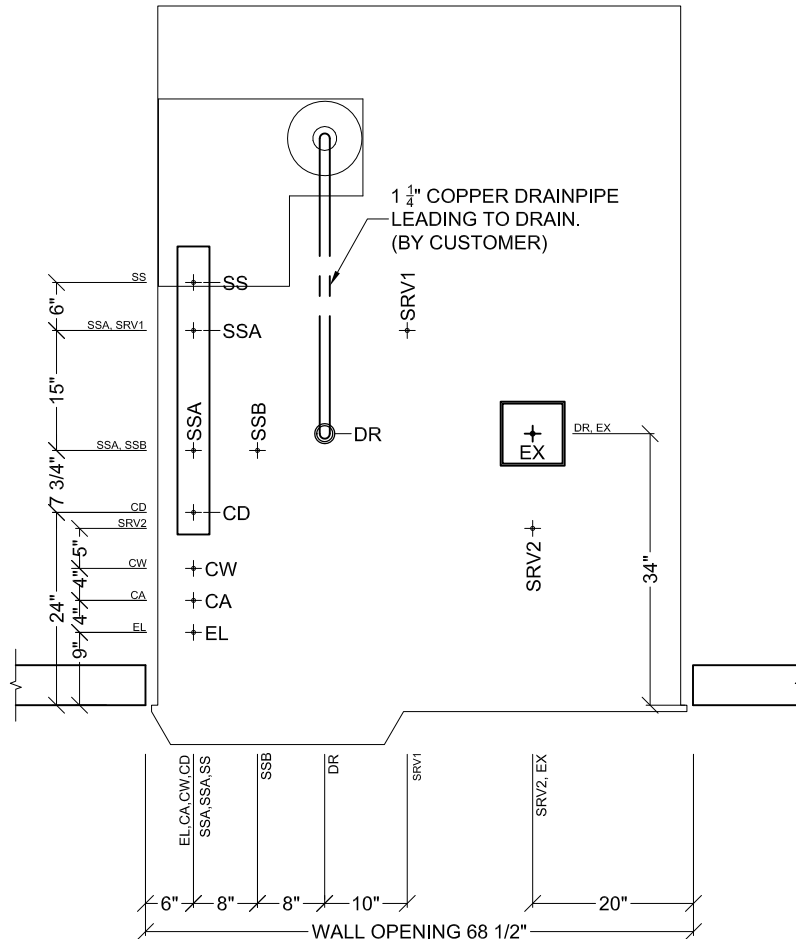
2284 Clements Ferry Road, Charleston, SC 29492
Tel: (800) 457-4117 Web: www.belimed.us

BELIMED STERILIZER

SINGLE DOOR, RACK LOADER

Dwg. No. : MST-H_Rack1-T-Dwg_CoC#_7	Date : 9/14/10	Scale : 1/2" = 1'	Revision : 7
Top view of sterilizer.		CAD Operator : TJC	
Pages : 1 of 8		EQUIPMENT TOP VIEW	

EL	ELECTRIC CONNECTION
EX	EXHAUST
CA	COMPRESSED AIR
CD	CONDENSATE
CW	COLD WATER
DR	DRAIN </td
SS	STEAM SUPPLY
SSA	MANIFOLD STEAM OUT
SSB	STERILIZER STEAM IN
SRV1	SAFETY VALVE CONNECTION
SRV2	SAFETY VALVE CONNECTION



Belimed
Infection Control

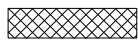
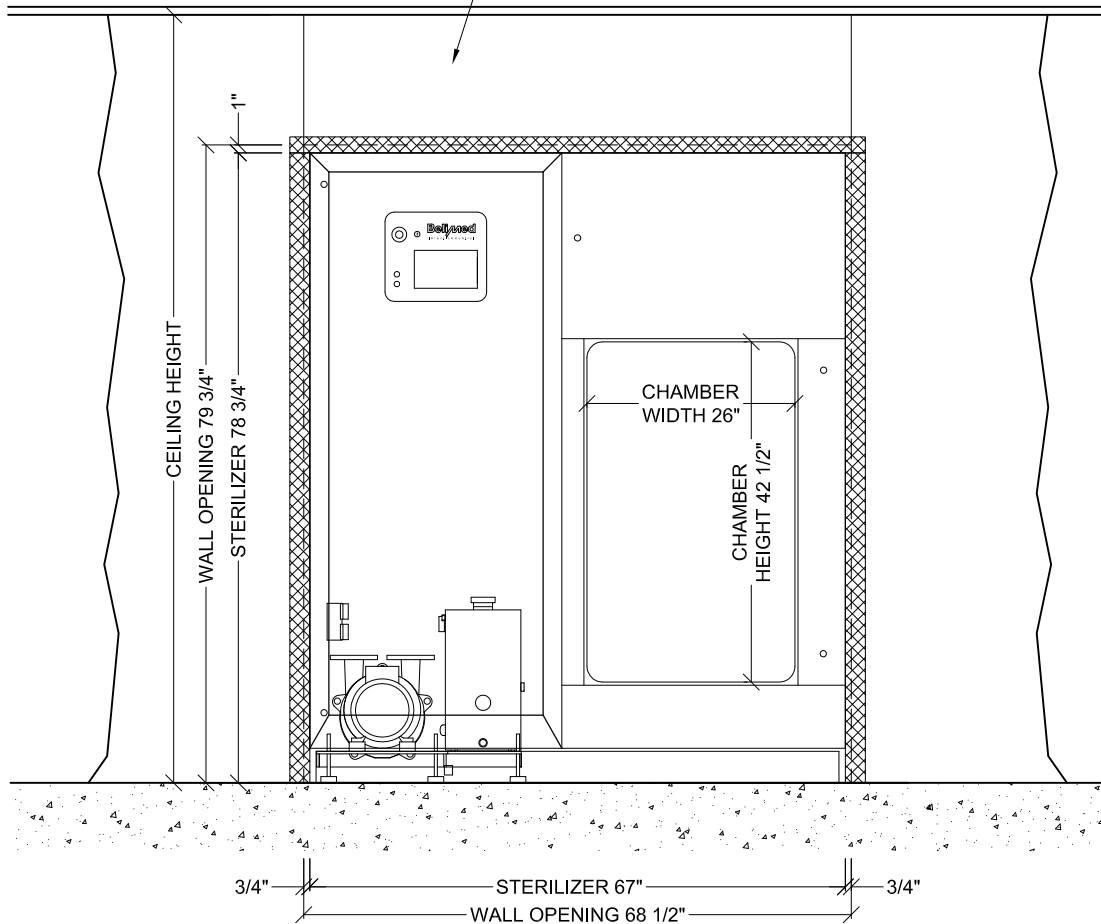
2284 Clements Ferry Road, Charleston, SC 29492
Tel: (800) 457-4117 Web: www.belimed.us

BELIMED STERILIZER

SINGLE DOOR, RACK LOADER

Dwg. No. : MST-H_Rack1-T-Dwg_CoC# 7	Date : 9/14/10	Scale : 1/2" = 1'	Revision : 7
Top view of site preparation for sterilizer.		CAD Operator : TJC	
Pages : 2 of 8		SITE PREPARATION TOP VIEW	

WALL SECTION DIRECTLY ABOVE OPENING, CAN BE SUBSTITUTED WITH A STAINLESS STEEL PANEL. (PANEL IS AVAILABLE THROUGH BELIMED AT AN ADDITIONAL COST).



OPTIONAL STAINLESS STEEL TRIM.

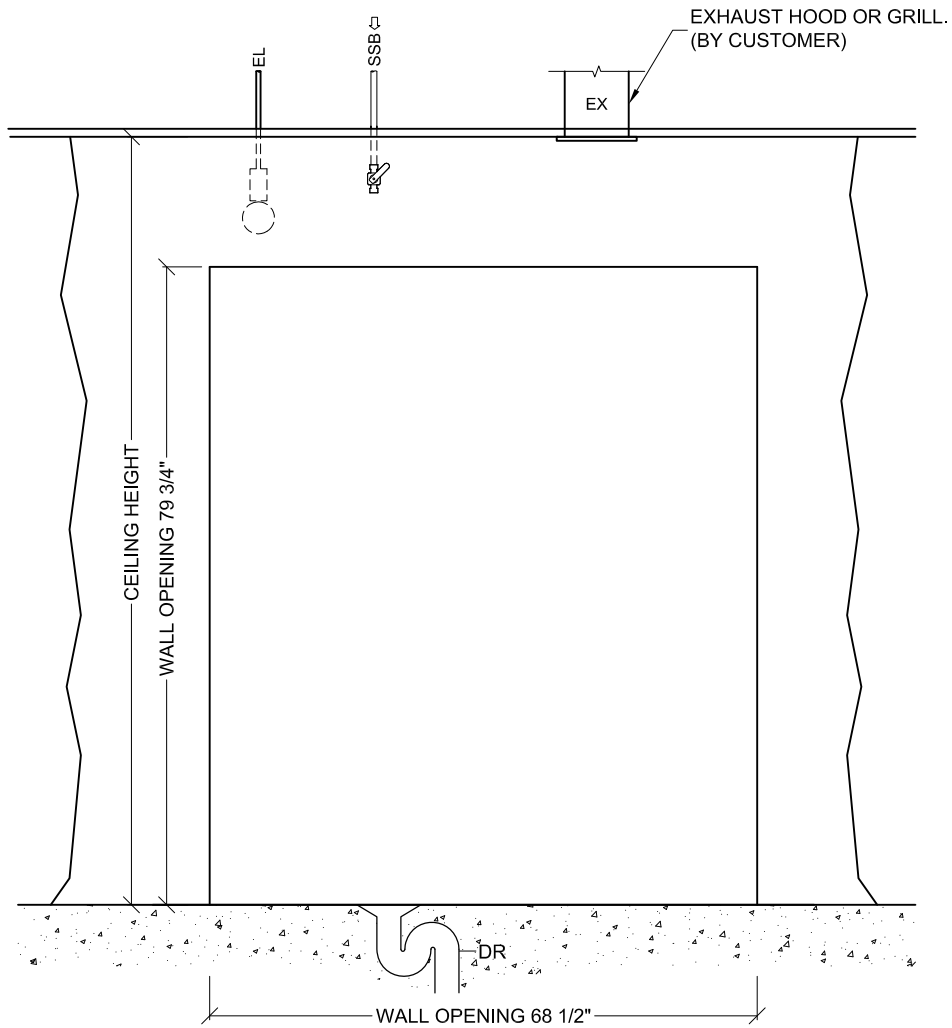
Belimed
Infection Control

2284 Clements Ferry Road, Charleston, SC 29492
Tel: (800) 457-4117 Web: www.belimed.us

BELIMED STERILIZER

SINGLE DOOR, RACK LOADER

Dwg. No. : MST-H_Rack1-T-Dwg_CoC#_7	Date : 9/14/10	Scale : 1/2" = 1'	Revision : 7
Front view of sterilizer.		CAD Operator : TJC	
Pages : 3 of 8		FRONT EQUIPMENT VIEW	



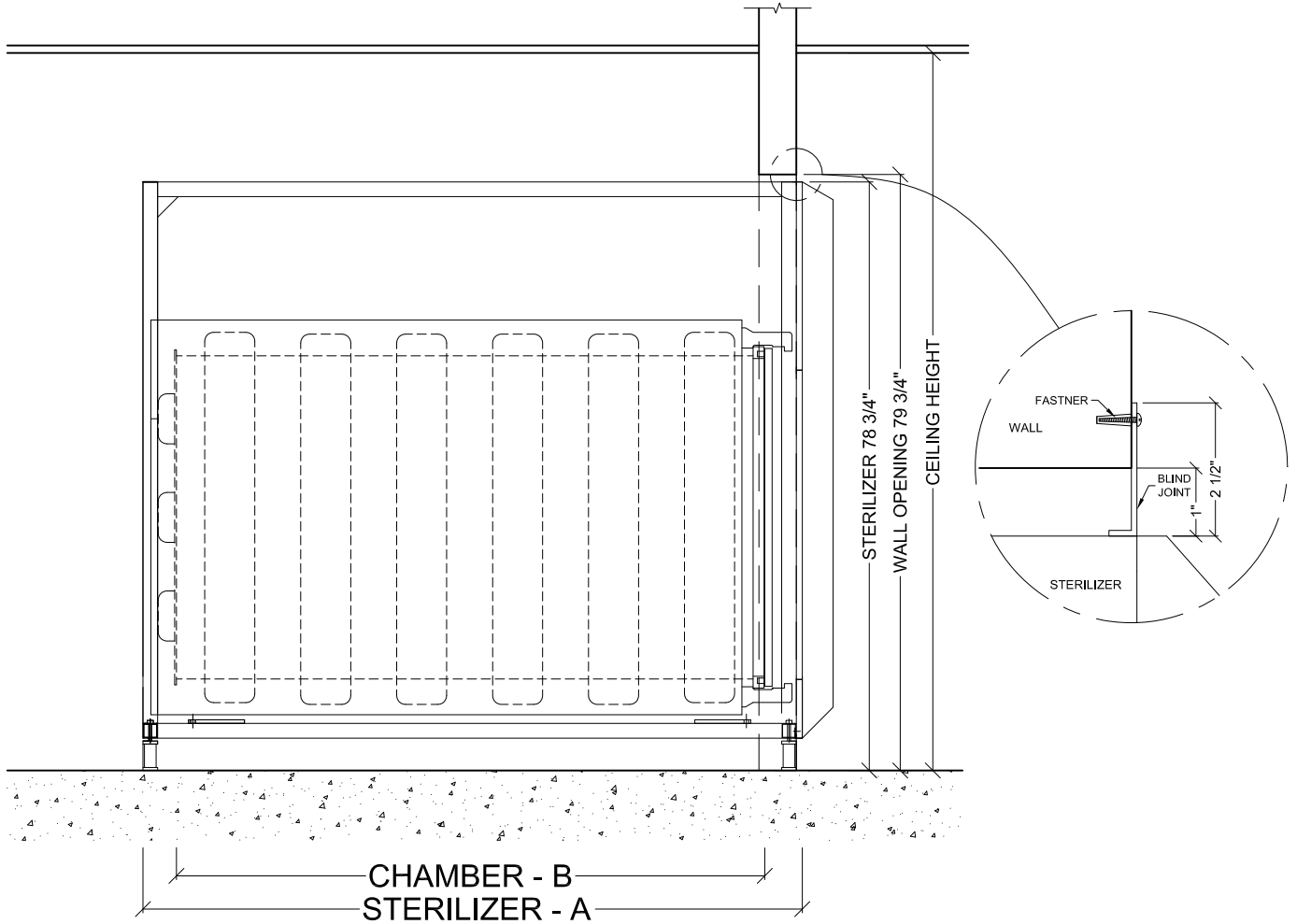
Belimed
Infection Control

2284 Clements Ferry Road, Charleston, SC 29492
Tel: (800) 457-4117 Web: www.belimed.us

BELIMED STERILIZER

SINGLE DOOR, RACK LOADER

Dwg. No. : MST-H_Rack1-T-Dwg_CoC# 7	Date : 9/14/10	Scale : 1/2" = 1'	Revision : 7
Front view of site preparation for sterilizer.		CAD Operator : TJC	
		Pages : 4 of 8	SITE PREPARATION FRONT VIEW



STERILIZER MODEL	A	B
9-6-9 HS1	50 1/2"	41"
9-6-12 HS1	64 1/2"	55"
9-6-15 HS1	76 1/2"	67"
9-6-18 HS1	88 1/4"	78 3/4"

Belimed

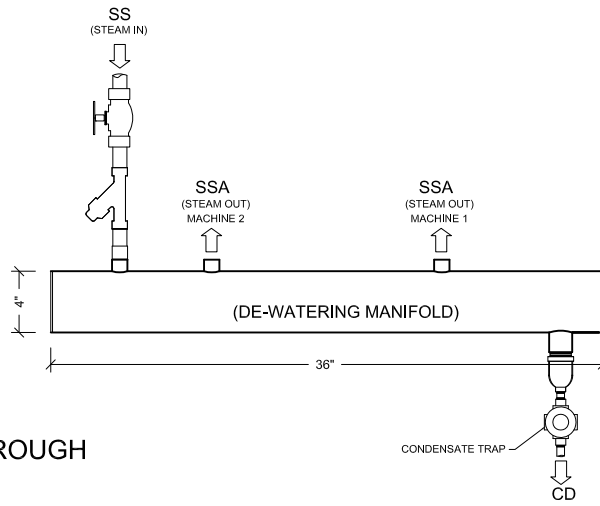
Infection Control

2284 Clements Ferry Road, Charleston, SC 29492
Tel: (800) 457-4117 Web: www.belimed.us

BELIMED STERILIZER

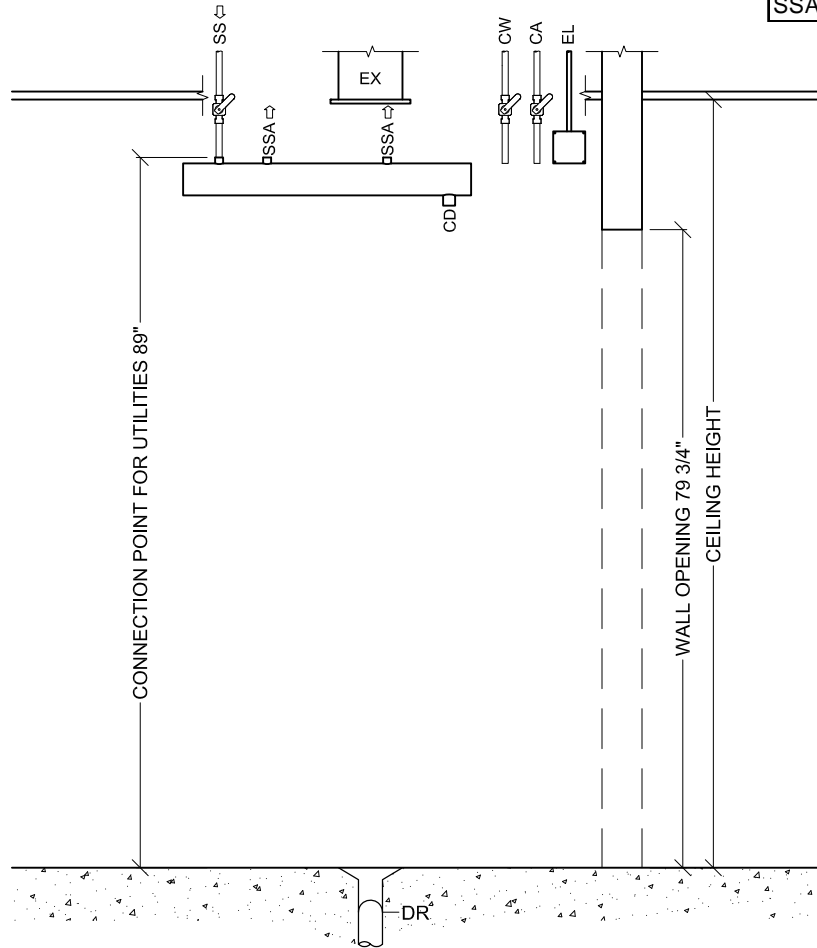
SINGLE DOOR, RACK LOADER

Dwg. No. : MST-H_Rack1-T-Dwg_CoC#_7	Date : 9/14/10	Scale : 1/2" = 1'	Revision : 7
Side view of sterilizer.		CAD Operator : TJC	
		Pages : 5 of 8	EQUIPMENT SIDE VIEW



STEAM MANIFOLD IS AVAILABLE THROUGH BELIMED AT AN ADDITIONAL COST.

EL	ELECTRIC CONNECTION
EX	EX-HAUST
CA	COMPRESSED AIR
CD	CONDENSATE
CW	COLD WATER
DR	DRAIN
SS	STEAM SUPPLY
SSA	MANIFOLD STEAM OUT



Belimed
Infection Control
2284 Clements Ferry Road, Charleston, SC 29492
Tel: (800) 457-4117 Web: www.belimed.us

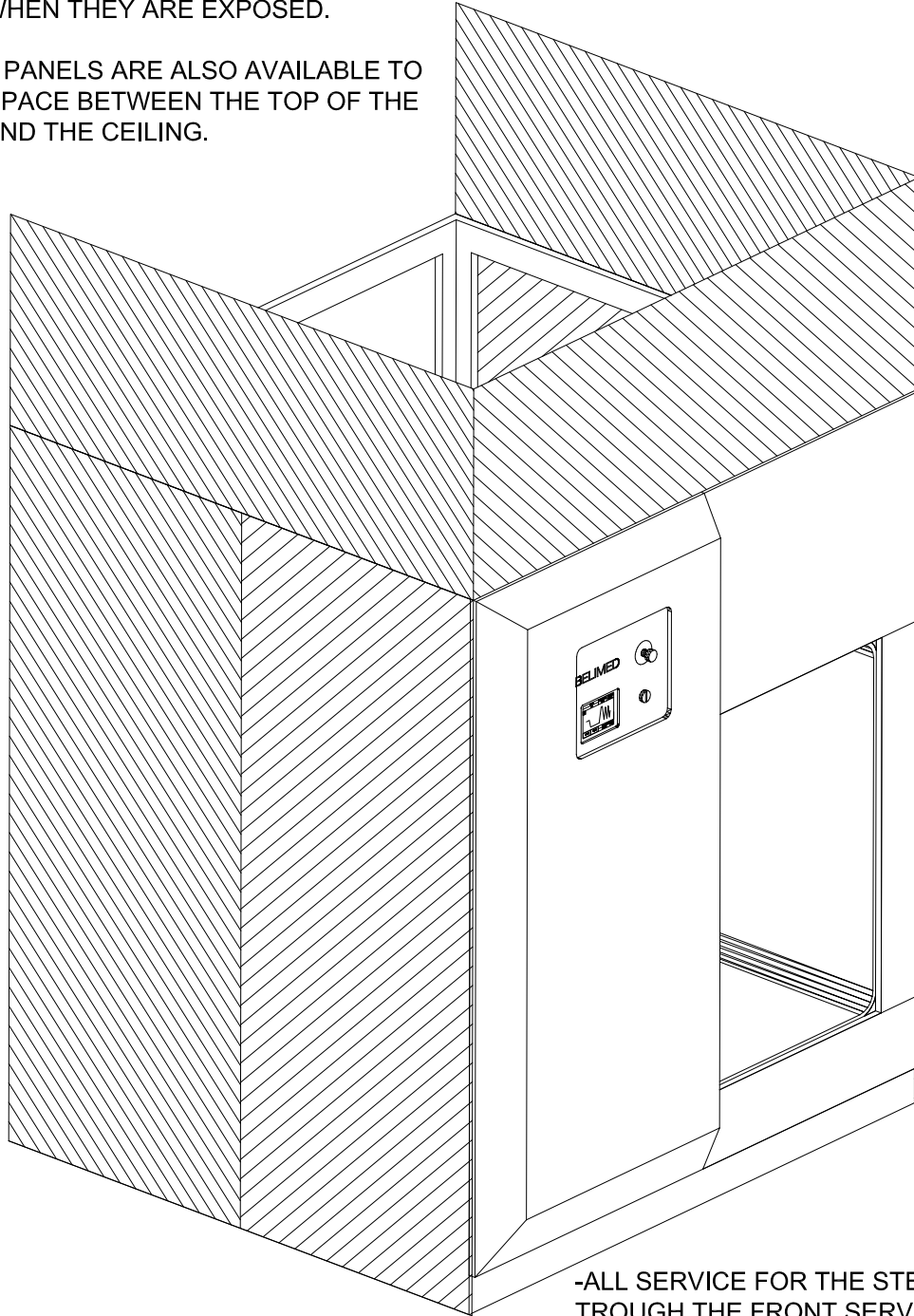
BELIMED STERILIZER

SINGLE DOOR, RACK LOADER

Dwg. No. : MST-H_Rack1-T-Dwg_CoC# 7	Date : 9/14/10	Scale : 1/2" = 1'	Revision : 7
Side view of site preparation for sterilizer.		CAD Operator : TJC	
Pages : 6 of 8		SIDE VIEW	

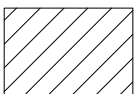
-STAINLESS STEEL ENCLOSURE PANELS CAN BE USED TO COVER THE SIDES AND/OR BACK OF THE STERILIZER WHEN THEY ARE EXPOSED.

-ENCLOSURE PANELS ARE ALSO AVAILABLE TO COVER THE SPACE BETWEEN THE TOP OF THE STERILIZER AND THE CEILING.



-ALL SERVICE FOR THE STERILIZER IS DONE THROUGH THE FRONT SERVICE DOOR. NO ADDITIONAL ACCESS IS NEEDED; THEREFORE, THEY CAN BE ENCLOSED BY WALLS OR STAINLESS STEEL PANELS. THE ONLY SPACE REQUIREMENT IS THAT THE FRONT FACE IS NOT OBSTRUCTED BY ANY OBJECTS.

-BELIMED STERILIZERS ARE AVAILABLE WITH A LEFT HAND CHAMBER OR A RIGHT HAND CHAMBER.



STAINLESS STEEL ENCLOSURES AVAILABLE THROUGH BELIMED AT AN ADDITIONAL COST.

Belimed
Infection Control

2284 Clements Ferry Road, Charleston, SC 29492
Tel: (800) 457-4117 Web: www.belimed.us

BELIMED STERILIZER

SINGLE DOOR, RACK LOADER

Dwg. No. : MST-H_Rack1-T-Dwg_CoC# 7	Date : 9/14/10	Scale : 1/2" = 1'	Revision : 7
Optional stainless steel enclosures available through Belimed at an additional cost.		CAD Operator : TJC	
Pages : 7 of 8		OPTIONAL ENCLOSURES	

(9-6-9 , 9-6-12 , 9-6-15 , 9-6-18) HS1/HS2 STERILIZERS - TECHNICAL DATA

Ref.	Utility	Connection				Type	Pressure				Peak Consumption*				Consumption/Load*					
		9-6-9	9-6-12	9-6-15	9-6-18		9-6-9	9-6-12	9-6-15	9-6-18	units	9-6-9	9-6-12	9-6-15	9-6-18	units	9-6-9	9-6-12	9-6-15	9-6-18
SS	Steam supply	1 1/4"	1 1/2"			NPT	40-50				3.5	4.6	5.6	6.6	lb/min	66	88	110	132	lb
CW	Cold Water	3/4"		1"	30-70				8.8	11	13.2		gal/min	93	119	159	185	gal		
CA	Compressed Air	1/4"					70-100				0.28				CFM	17				ft³
EL	Electric Supply	4x4 junction box w / receptacle									2.5		3.4		kW	1.2		1.7		kWh
DR	Open Drain	Indirect drain									9.2	12	17		gal/min	101	130	172	201	gal
CD	Condensate	3/4"			NPT															

Optional utilities for chilled water cooling (used for reduction of cold water consumption).

CS	Chilled Water supply	1 1/4"				NPT	30-70				PSIG	17	22	26	gal/min	63k	82k	107k	119k	BTU
CR	Chilled Water Return	1 1/4"																		
CW	Cold Water	3/4"		1"	30-70				PSIG	4.4		gal/min	2.6				gal			

Carry-in Dimensions	9-6-9	9-6-12	9-6-15	9-6-18	units	Weights	9-6-9 HS1	9-6-12 HS1	9-6-15 HS1	9-6-18 HS1	units	9-6-9 HS2	9-6-12 HS2	9-6-15 HS2	9-6-18 HS2	units
Height	75	75	75	75	in.	Transport	3197	4850	5401	5622	lb	4145	5335	5842	6283	lb
Width	58	67	67	67		Operating	3704	4188	4637	5158		4652	5136	5621	6106	
Length	67	70	75	93		Test	5071	7826	8708	9590		6041	8334	9150	10031	

Utility Notes (Requirements per sterilizer):

SS	Steam supply	Steam must be dry, saturated, free from all impurities such as gases, oil, dirt, or other contaminants. Provide adequate steam strainer typical for sterilizers. All steam drops must be piped from top of steam supply line.
CW	Cold Water	Cold water is used to prime the vacuum pump and cool the condensate. Colder water temperatures will result in less water consumption. Water should be softened to 0-60 ppm. Use sediment filter similar to <i>Grainger part No. 4BA87</i> .
CA	Compressed Air	Air must be dry and oil free. Used to operate pneumatic control system.
EL	Electric Supply	9-6-9 and 9-6-12: 3-Phase ; 208 V ; 60 Hz ; Provide 20 A circuit protection with receptacle: NEMA 15-20R; 9-6-15 and 9-6-18: 3-Phase ; 208 V ; 60 Hz ; Provide 30 A circuit protection with receptacle: NEMA 15-30R;
DR	Open Drain	Provide floor drain and trap.
CD	Condensate	Condensate removal by customer as per local code.
EX	Equipment Area Exhaust	Provide sufficient air exhaust to remove 1 kW heat rejection for (9-6-9 and 9-6-12) or 4.5 kW heat rejection for (9-6-15 and 9-6-18).
CS	Chilled Water Supply (Optional)	Feed water at ~50°F with a temperature difference ΔT of 15 K.
CR	Chilled Water Return (Optional)	Pressure difference ΔP CS/CR must be greater than 7 PSIG.
SRV1	Safety Pressure Relief Valve (chamber)	Provide connection to safety relief valve and pipe to drain, atmosphere, or as required by local code. Outlet size = 1 1/2" FNPT.
SRV2	Safety Pressure Relief Valve (jacket)	Provide connection to safety relief valve and pipe to drain, atmosphere, or as required by local code. Outlet size = 1" FNPT.

*Consumptions calculated under Pre-vac cycle at 270°F and water temperature of 68°F.

Additional Information:

- NPT = Male pipe thread
- FNPT = Female pipe thread
- Customer must provide service valves and strainers for steam and water supply.
- For alternate utility connections, please contact Belimed
- All utility supplies and connections are customer's responsibility.
- Left or right side chamber is available.



9/10/2010

Technical Drawing CoC: CoC#

Technical Data: CoC#_B



2284 Clements Ferry Road, Charleston, SC 29492
Tel: (800) 457-4117 Web: www.belimed.us

BELIMED STERILIZER

SINGLE DOOR, RACK LOADER

Dwg. No. : MST-H_Rack1-T-Dwg_CoC#_7	Date : 9/14/10	Scale : NTS	Revision :
Technical Data		CAD Operator : TJC	7
Pages : 8 of 8		TECHNICAL DATA	