

Belimed

Infection Control


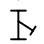
2284 Clements Ferry Road, Charleston, SC 29492
Tel: (800) 457-4117 Web: www.belimed.us

BELIMED WD290E
WASHER/DISINFECTOR

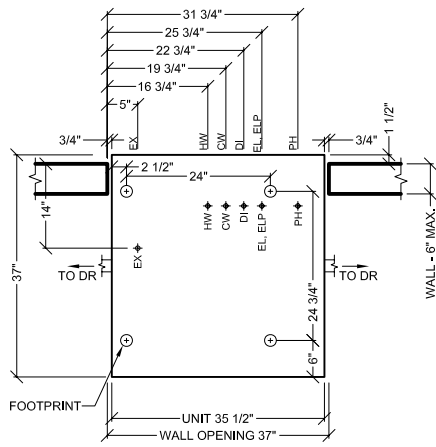
Typical installation of a Belimed WD290E Washer/Disinfector.

Dwg. No.:	CUT-WD290E	Rev.:	A
Drawn By:	BSH	Date:	9/15/09
Scale:	3/4" = 1'	Page:	1 of 4

LEGEND

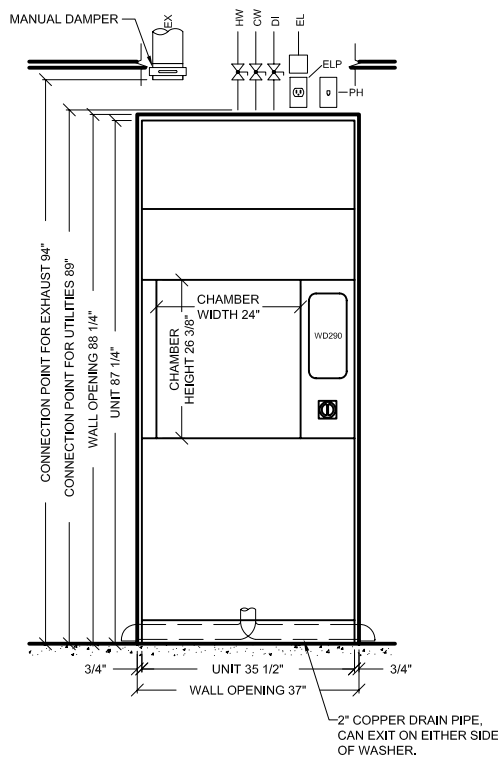
-  — SERVICE SHUT-OFF VALVE, BY OTHERS
-  — STEAM PARTICLE STRAINER, BY OTHERS

CLEAN SIDE

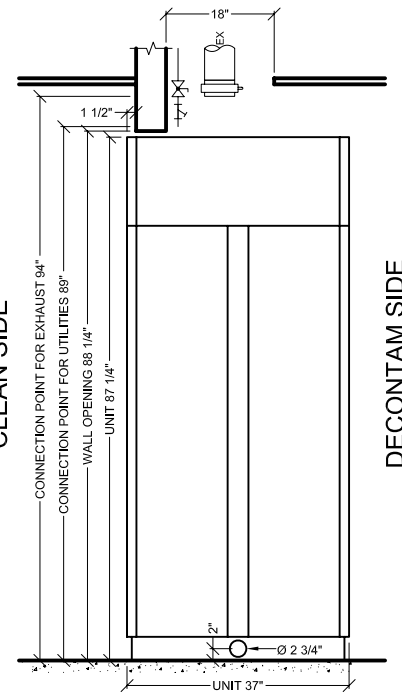


DECONTAM SIDE

PLAN VIEW



DECONTAM ELEVATION



SIDE ELEVATION



Infection Control

2284 Clements Ferry Road, Charleston, SC 29492
Tel: (800) 457-4117 Web: www.belimed.us

BELIMED WD290E
WASHER/DISINFECTOR

TECHNICAL DRAWING

Typical installation of a Belimed WD290E Washer/Disinfector.

Dwg. No.: CUT-WD290E

Drawn By: BSH

Scale: 3/8" = 1'

Rev.: A

Date: 9/15/09

Page: 2 of 4

WD290E WASHER/DISINFECTOR - TECHNICAL SPECIFICATIONS

REQUIRED INPUTS

Symbol	Description	Value	Unit	Utility Notes	
HW	Utility:	Hot Water		Hot water must have a total hardness less than 60 ppm. Minimum temperature of 120°F. (Colder HW temperature will result in longer cycles and higher steam consumption.)	
	Connection Size:	3/4 inch			
	Connection Type:	NPT			
	Pressure:	Min: 30	Max: 70		psig
	Peak Consumption:	10.6			gal/min
	*Consumption per Load:	Min: 24.0	Max: 27.3	gal	
CW	Utility:	Cold Water		Cold water must have a total hardness less than 60 ppm.	
	Connection Size:	3/4 inch			
	Connection Type:	NPT			
	Pressure:	Min: 30	Max: 70		psig
	Peak Consumption:	10.6			gal/min
	*Consumption per Load:	Min: 8.0	Max: 9	gal	
DI	Utility:	Deionized Water		Deionized (DI) or Reverse Osmosis (RO) water can be used with a conductivity <30 µS/cm. (Slower flow rate results in longer cycle times.)	
	Connection Size:	3/4 inch			
	Connection Type:	NPT			
	Pressure:	Min: 30	Max: 70		psig
	Operating Consumption:	Min: 2.0	Max: 10.6		gal/min
	*Consumption per Load:	Min: 8.0	Max: 9	gal	
EL	Utility:	Electric		Peak consumption occurs during drying portion of cycle.	
	Connection Type:	Hard wire within junction box			
	Voltage (Phase):	3			Phase
	Voltage (Nominal):	208			VAC
	Voltage (Frequency):	60			Hz
	Circuit Protection:	50			Amps
	Peak Consumption:	46.5			Amps
	*Power Consumption per Load:	kW-h			
PH	Utility:	Phone		Provide one analog phone line per system	
	Connection Type:	RJ11 Receptacle			
ELP	Utility:	Electric for Phone		One GFCI receptacle per WD	
	Connection Type:	110V GFCI Receptacle			

* Minimum consumption values are for an "Instruments - Normal Cycle" w ith Belichem 888 and empty load. Maximum consumption values are for an "Instruments - Normal Cycle" w ith Belichem 100 and full load.

* Starred values are subject to variation w ith changes in rack size, utility inputs, and cycle setup.

Additional Information:

NPT = Male Pipe Thread

Maximum finished floor level tolerance is 1/4" for washer and conveyor area.

All utility supplies and connections are to be provided by others, per local code.



Infection Control

2284 Clements Ferry Road, Charleston, SC 29492
Tel: (800) 457-4117 Web: www.belimed.us

BELIMED WD290E WASHER/DISINFECTOR

TECHNICAL SPECIFICATIONS

Dwg. No.: CUT-WD290E

Rev.: A

Typical installation of a Belimed WD290E Washer/Disinfector.

Drawn By: BSH

Date: 9/15/09

Scale: NTS

Page: 3 of 4

WD290E WASHER/DISINFECTOR - TECHNICAL SPECIFICATIONS

ESTIMATED EMISSIONS

DR	<i>Utility:</i>	Open Drain	Provide flush mounted floor sink and trap.
	<i>Connection Size:</i>	2.0 inch	
	<i>Discharge Flow Rate:</i>	30.0 gal/min	
	<i>Connection Type:</i>	Indirect Drain	
EX	<i>Medium:</i>	Air Exhaust	Discharged air is at 100% humidity, others must provide proper drainage upstream as needed. Others to provide manual damper at each exhaust connection point. Acceptable duct materials (most to least preferable): Stainless steel, galvanized steel, polyethylene, or aluminum.
	<i>Connection Size:</i>	5 inch OD	
	<i>Peak Flow Rate:</i>	175 cfm	
	<i>Exhaust Back Pressure</i>	< 0.6 "WC	
	<i>Vacuum Pressure</i>	< 0.2 "WC@ nil supply	
	<i>Minimum Duct Diameter</i>	5 inch	
	<i>Medium:</i>	Heat Radiation	Free Standing Machine. Variation due to program variability in Ao value, dry time, and dry temperatures.
	<i>Radiation (Net):</i>	1000 W/hr	
	<i>Radiation (Tolerance):</i>	+/- 200 W/hr	
	<i>Medium:</i>	Noise Radiation	
	<i>Maximum Radiation (Net):</i>	62 dBA	

PHYSICAL SPECIFICATIONS

	<i>Parameter:</i>	Carry-In Dimensions	Machine alone (i.e. removed from packaging)
	<i>Height:</i>	72.5 in	
	<i>Width:</i>	35.5 in	
	<i>Length:</i>	37.0 in	
	<i>Parameter:</i>	Weights	Transport Weight = (Machine + Crating) Operating Weight = (Machine + Rack + Water + Instruments)
	<i>Transport Weight:</i>	920 lbs	
	<i>Operating Weight:</i>	1100 lbs	
	<i>Parameter:</i>	OSHPD	
	<i>OSHPD NUMBER:</i>	OPA-2099-07	



Infection Control

2284 Clements Ferry Road, Charleston, SC 29492
Tel: (800) 457-4117 Web: www.belimed.us

BELIMED WD290E WASHER/DISINFECTOR

TECHNICAL SPECIFICATIONS CONT.

Typical installation of a Belimed WD290E Washer/Disinfector.

Dwg. No. : CUT-WD290E	Rev. : A
Drawn By : BSH	Date : 9/15/09
Scale : NTS	Page : 4 of 4