

Work to be executed by the customer

1. Installation preparations: route and openings to bring in the equipment have to be checked according to our drawings. The carry in dimensions have to comply with.
2. Operating material, supply, discharge and connection pipes: All requirements have to comply with DIN 58 950 part 7. Otherwise you have to expect insufficient function and efficacy, negative influence on sterilised good and reduced life expectancy of the sterilizers.
3. Piping: have to be executed according to our installation drawings.
4. The customer has to provide shut off valves on all supply pipes.
5. All data and information refer to one sterilizer only.
6. If required, air gaps between sterilizer panelling and adjoining walls have to be sealed by the customer.

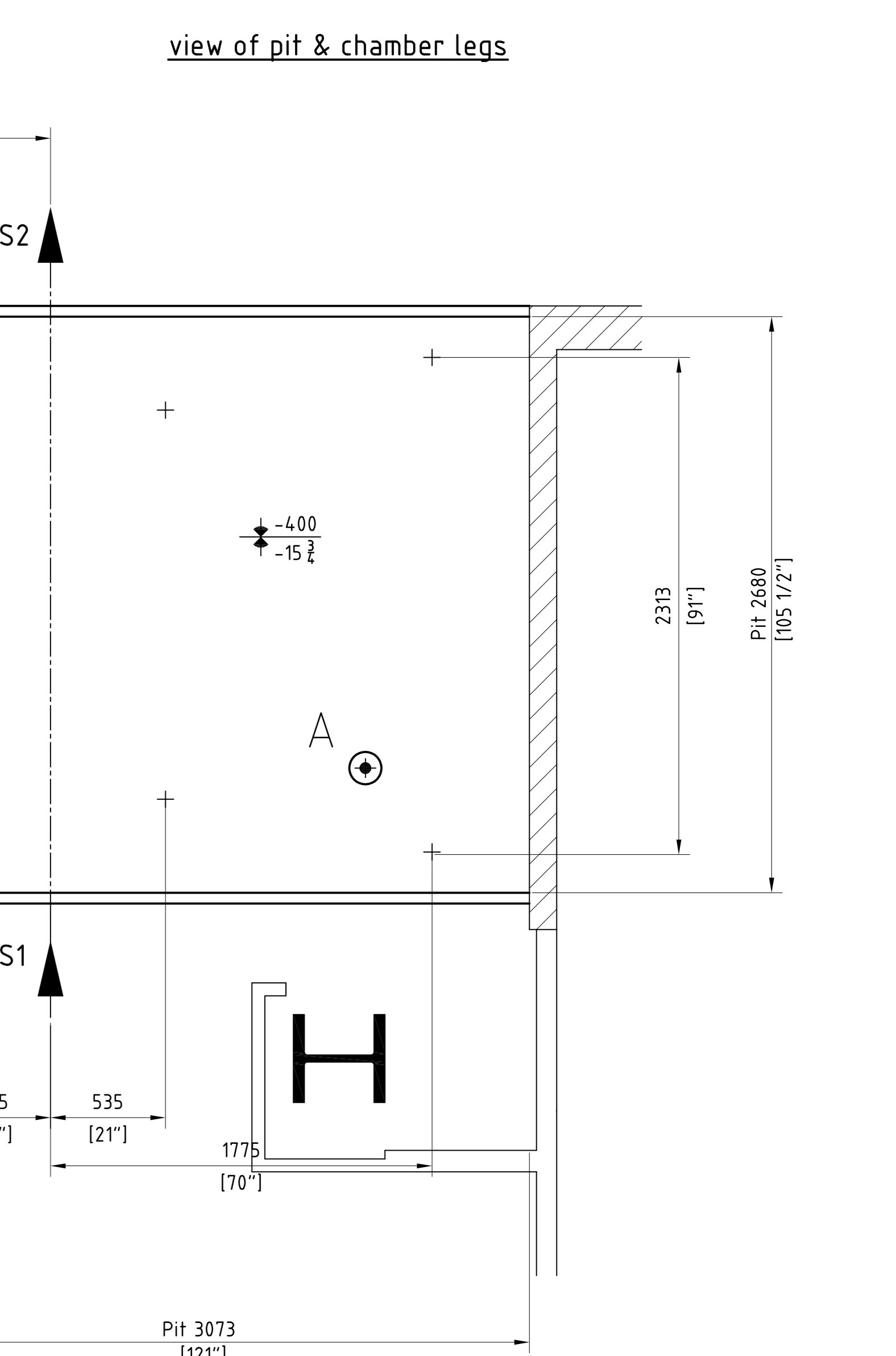
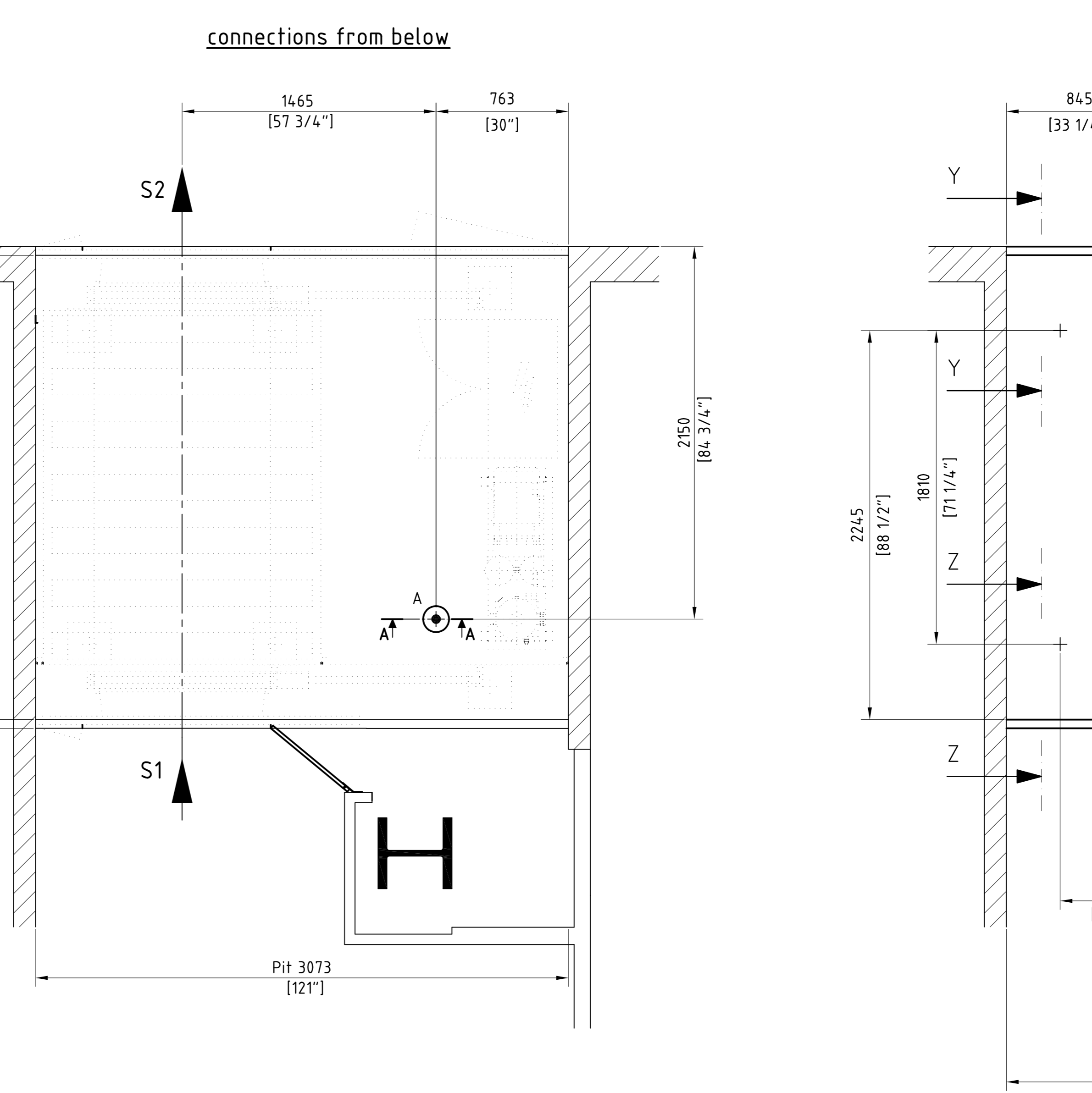
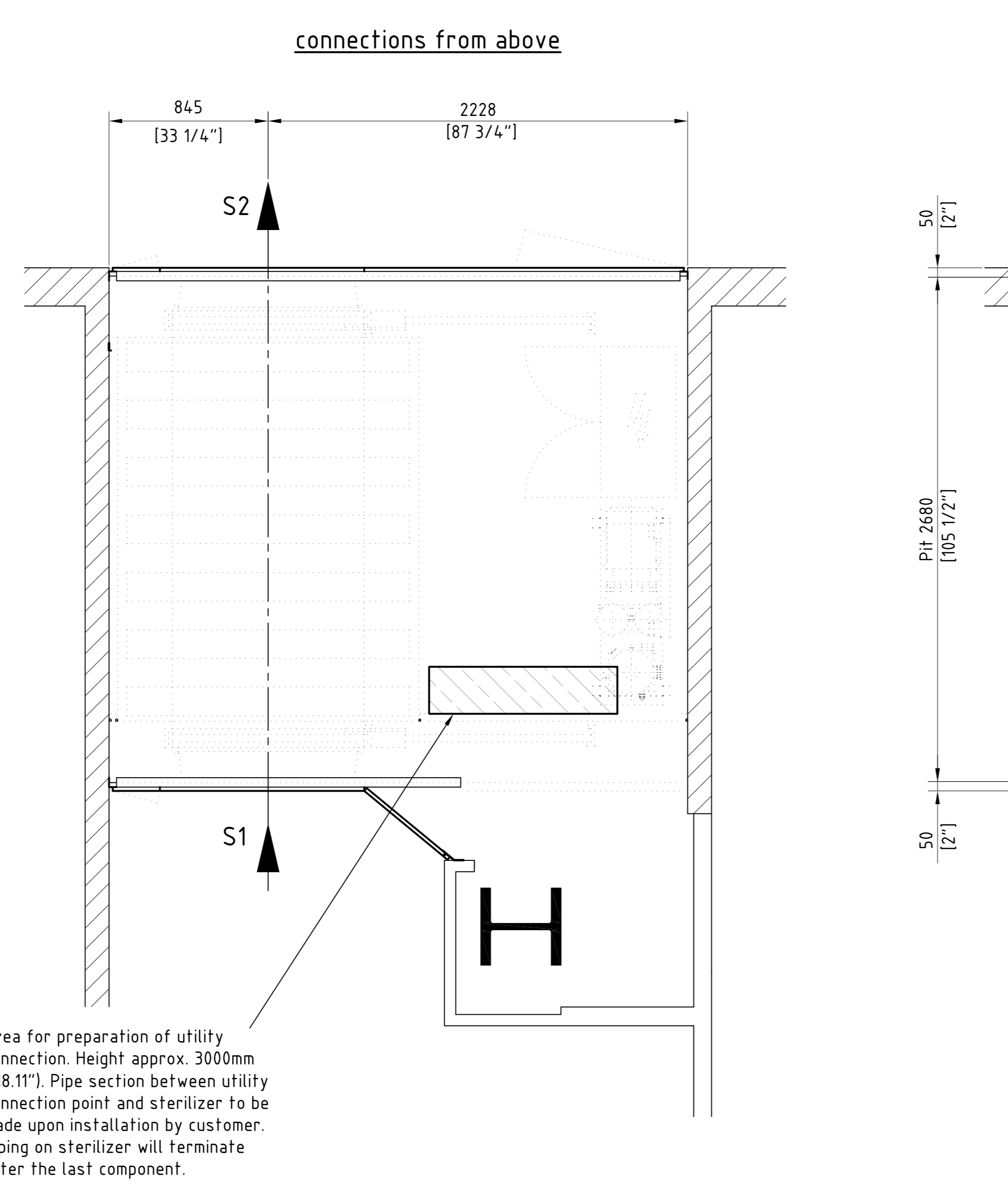
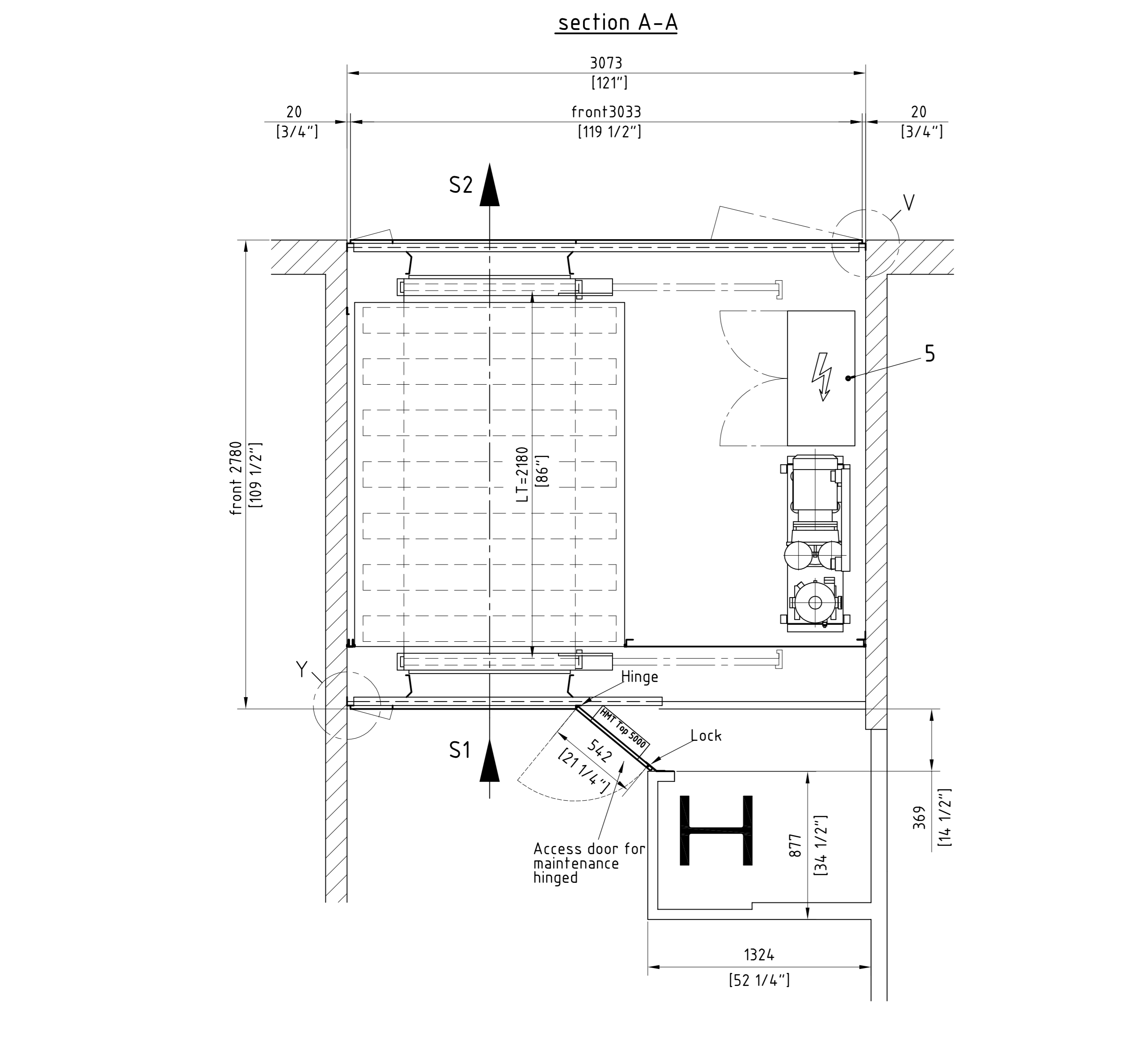
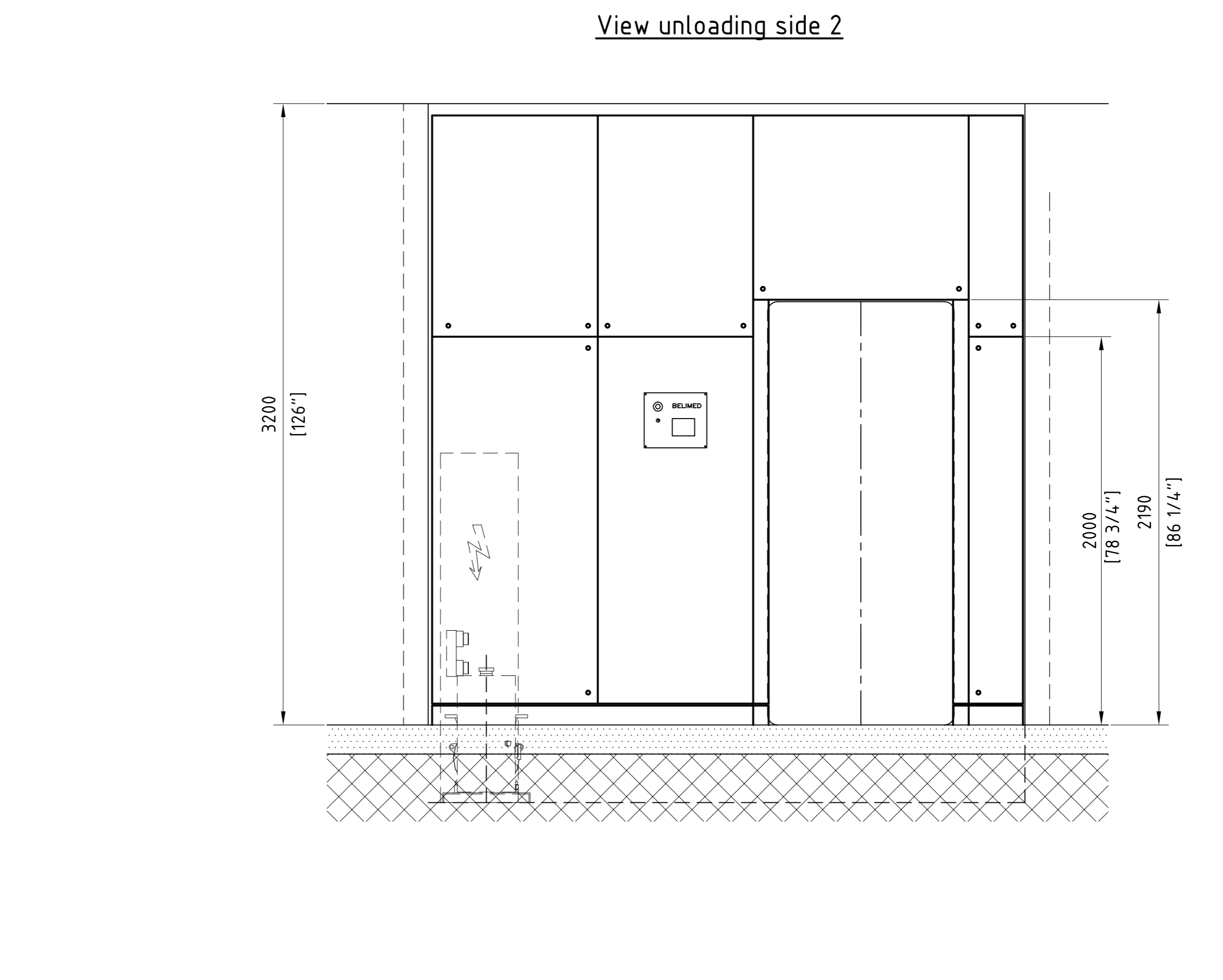
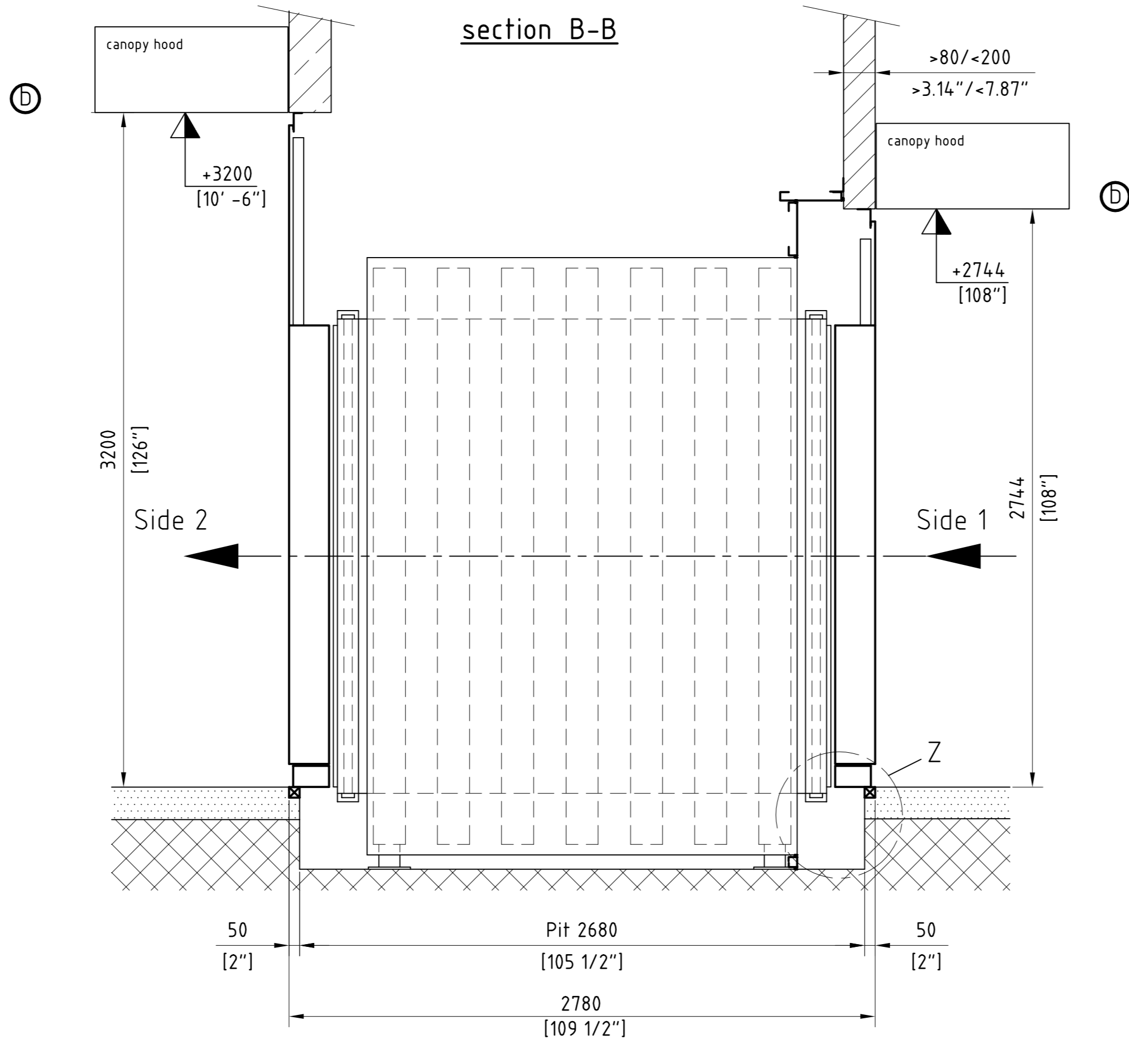
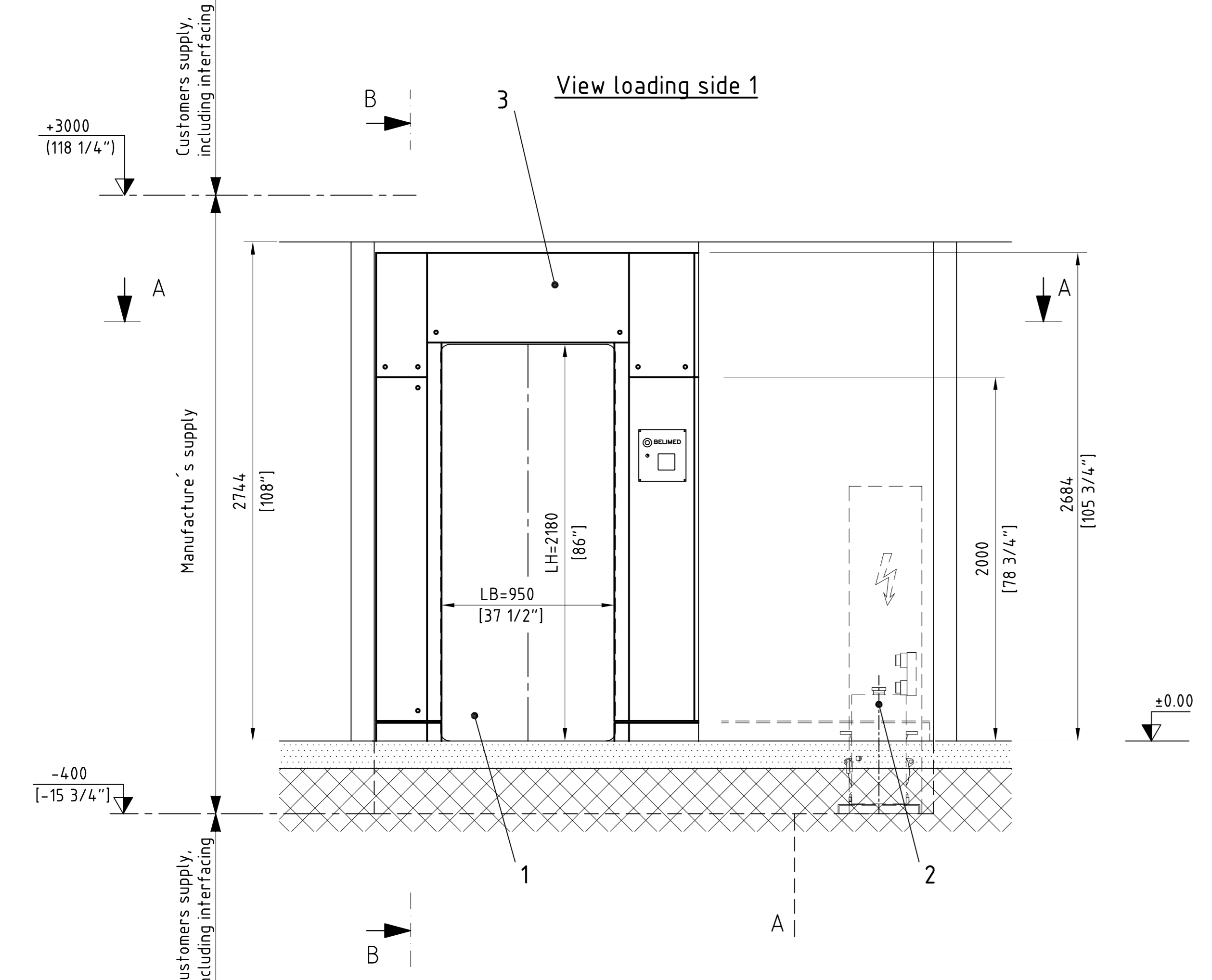
Code	Description	Material	Dimension	Pressure	Peak consumption	Consum./batch
KW	Tap water	1.4435	DN25 sleeve 1"	2-5 bar	4.8 m ³ /h	1.5 m ³
SD	Clean steam	1.4435	DN50 sleeve 2"	2-5 bar	222g/min	422 Ga
DL	Instrument air	1.4435	DN8 sleeve 1/4"	5-7 bar	500 kg/h	150 kg
				70-10 bar	36.43psi	330 LB
					10 Nm ³ /h	0.7 Nm ³
					8 st ft ³ /h	25.2st ft ³

Code	Description	Material	Dimension	Pressure	Peak consumption	Consum./batch
A	Process drain runs open in to GU	1.4435	DN50 sleeve 2"	---	55 l/min	---
AD1	Safety valve chamber, discharge over the roof.	1.4435	DN65 sleeve 2 1/2"	2.76 bar	14.5G/min	---
AD2	Safety valve jacket, discharge over the roof.	1.4435	DN32 sleeve 1 1/2"	40 psi	1600 kg/h	---
					3528 lb/h	---
					500 kg/h	---
					1100 lb/h	---

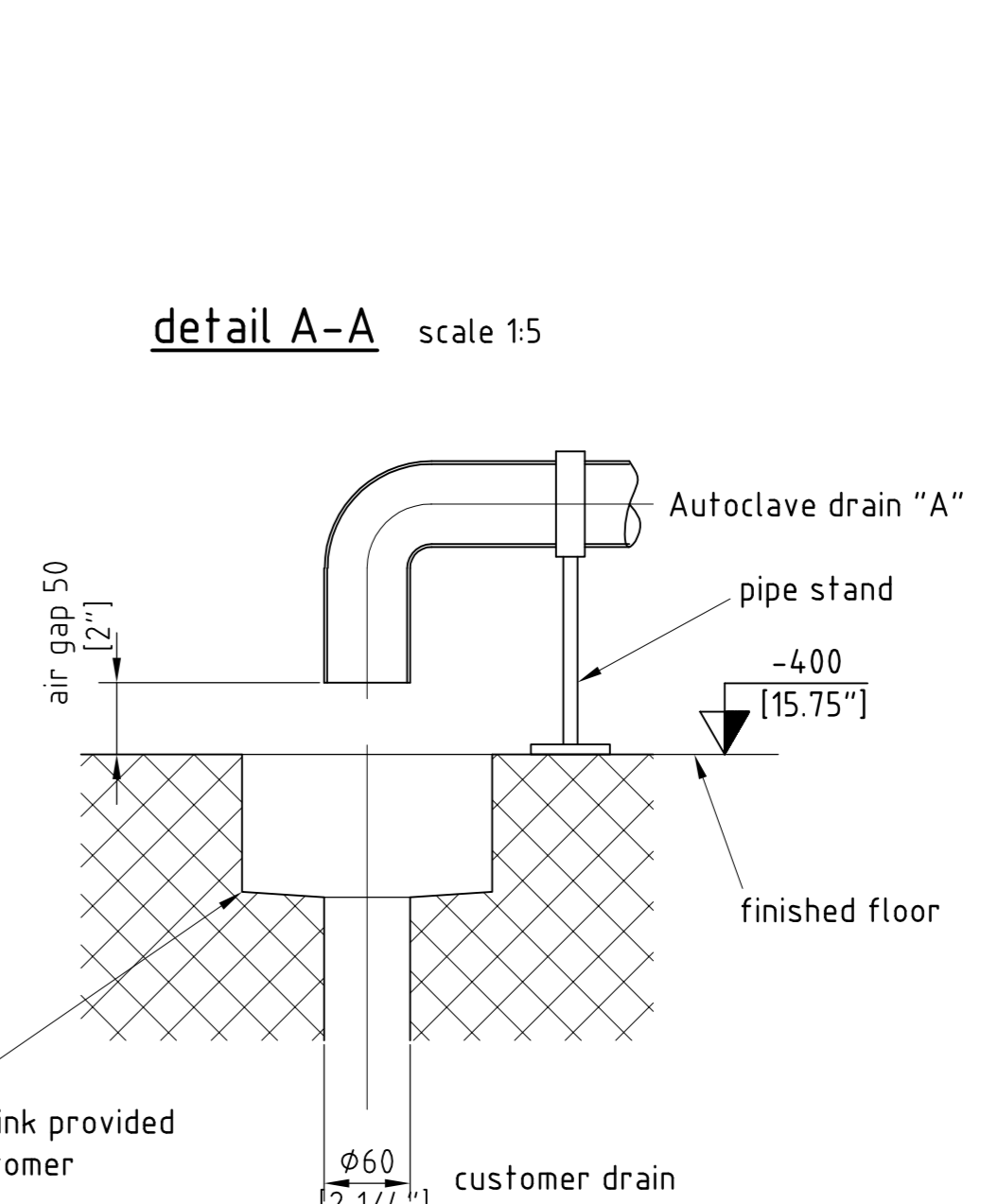
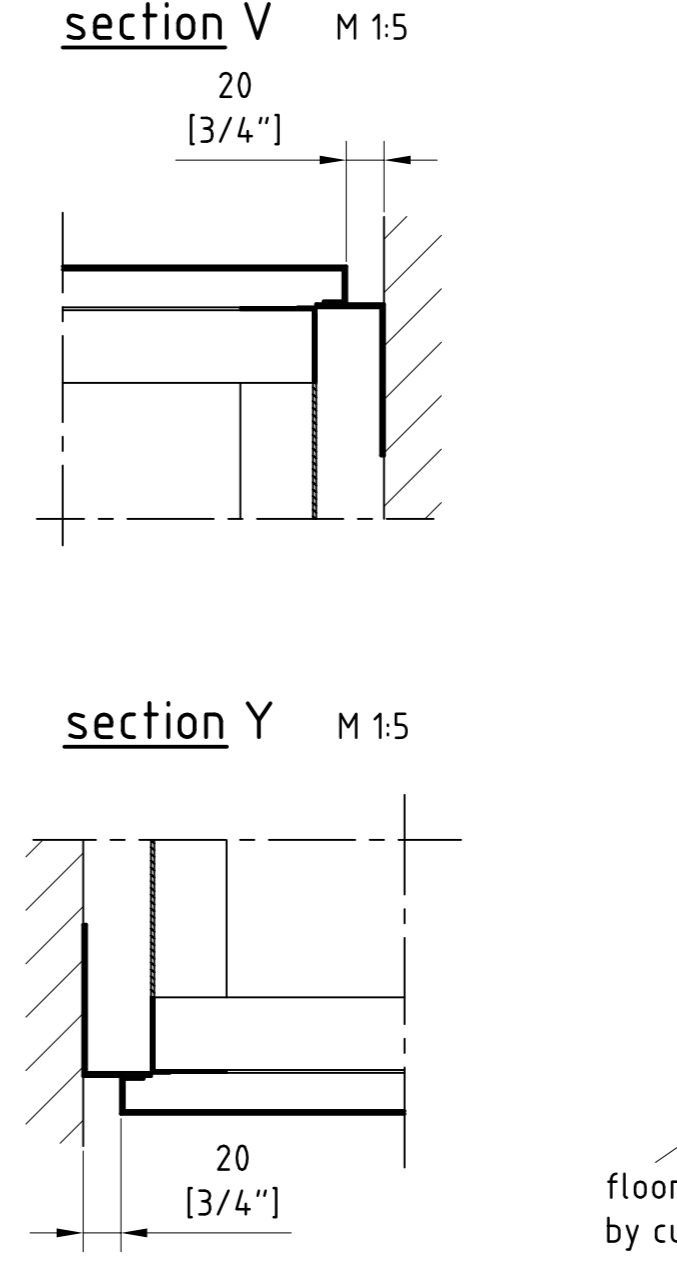
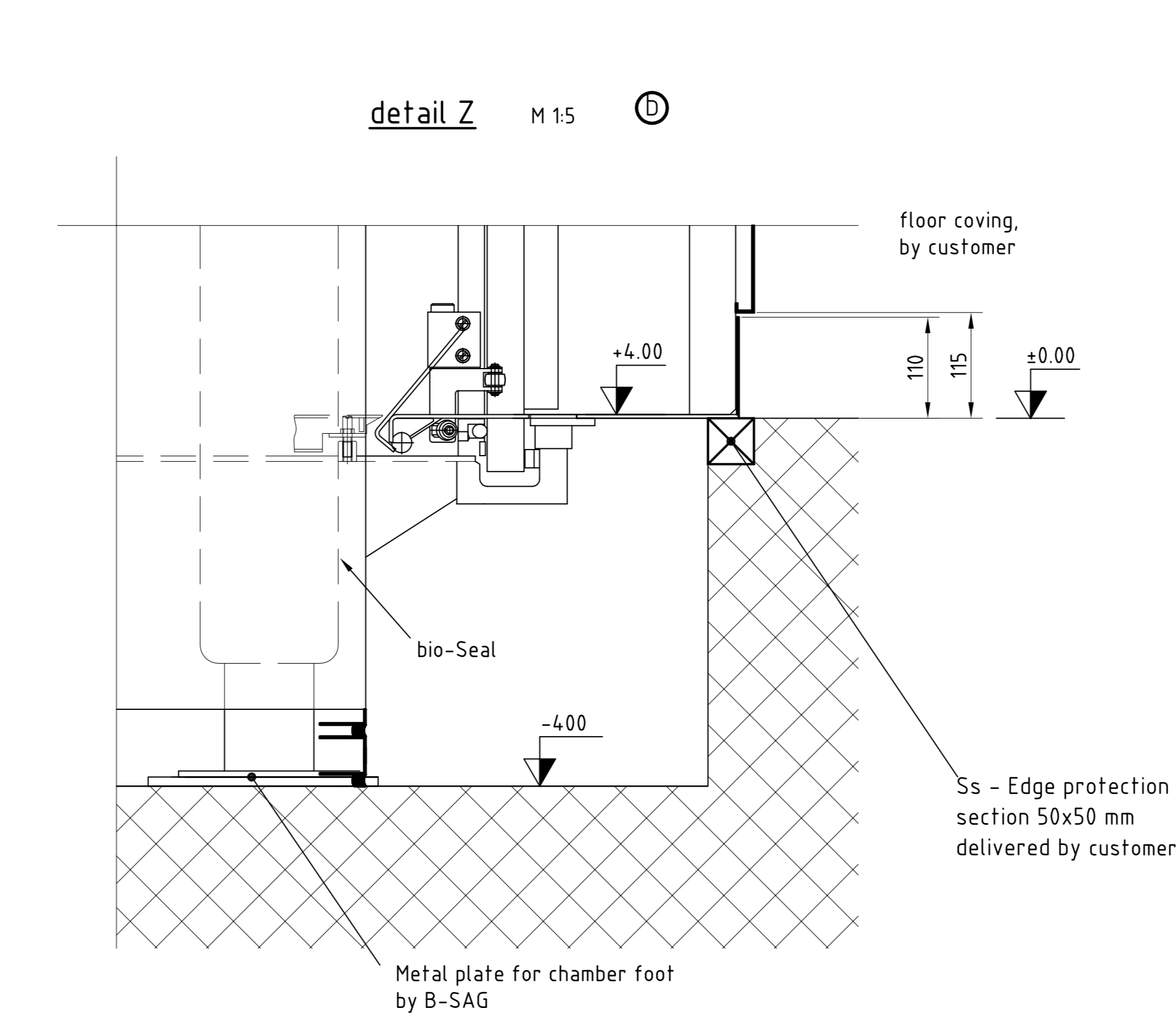
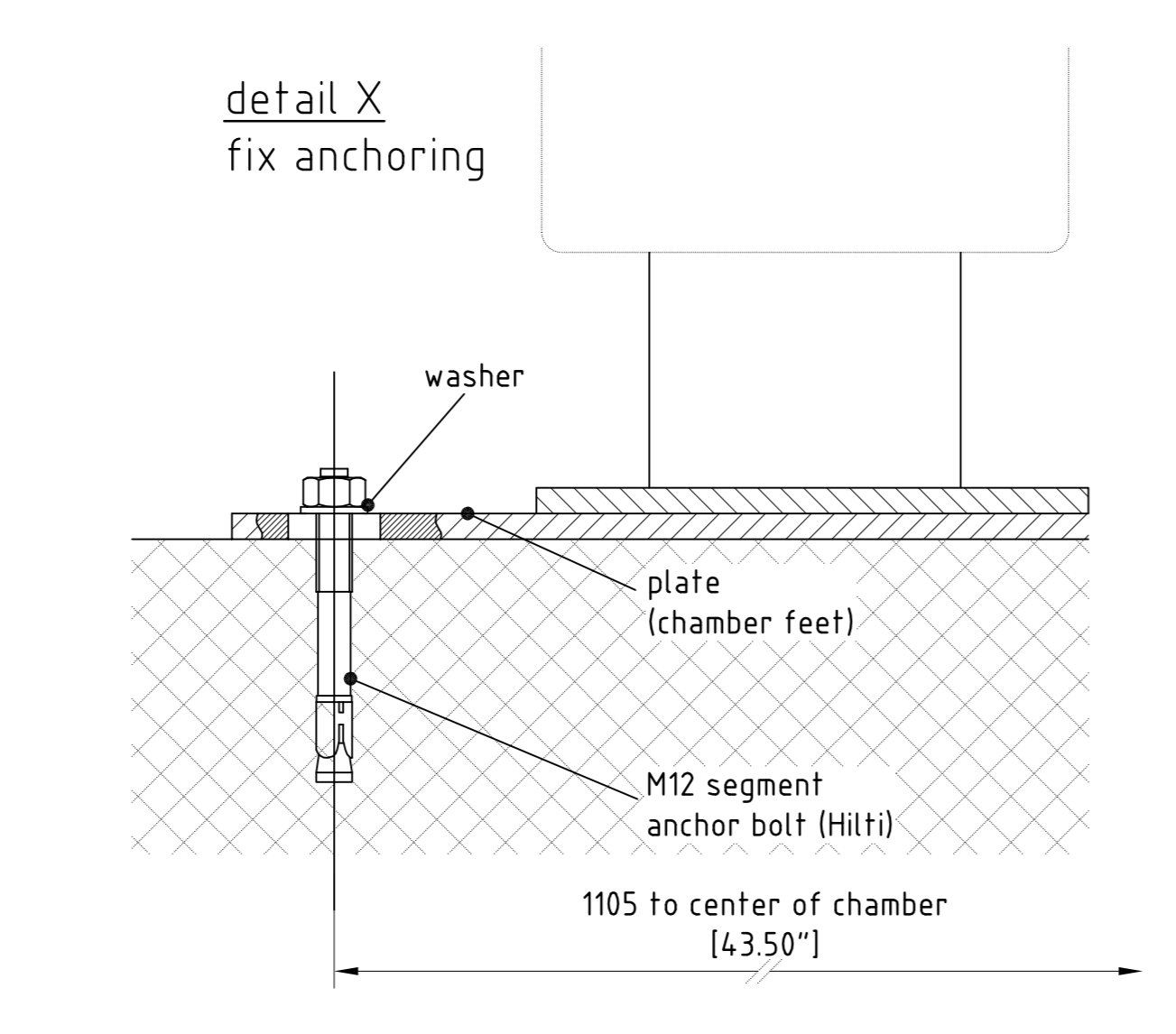
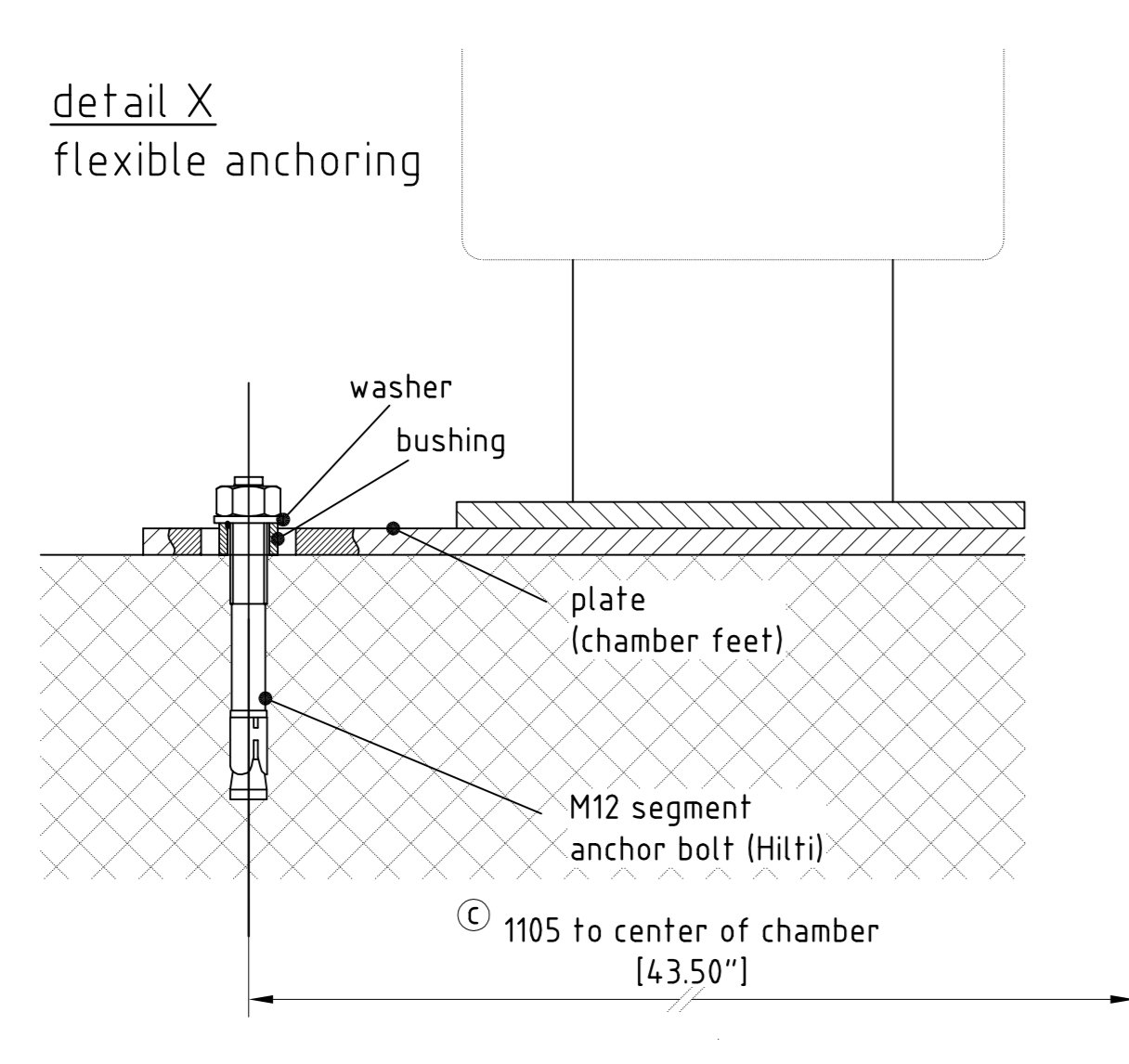
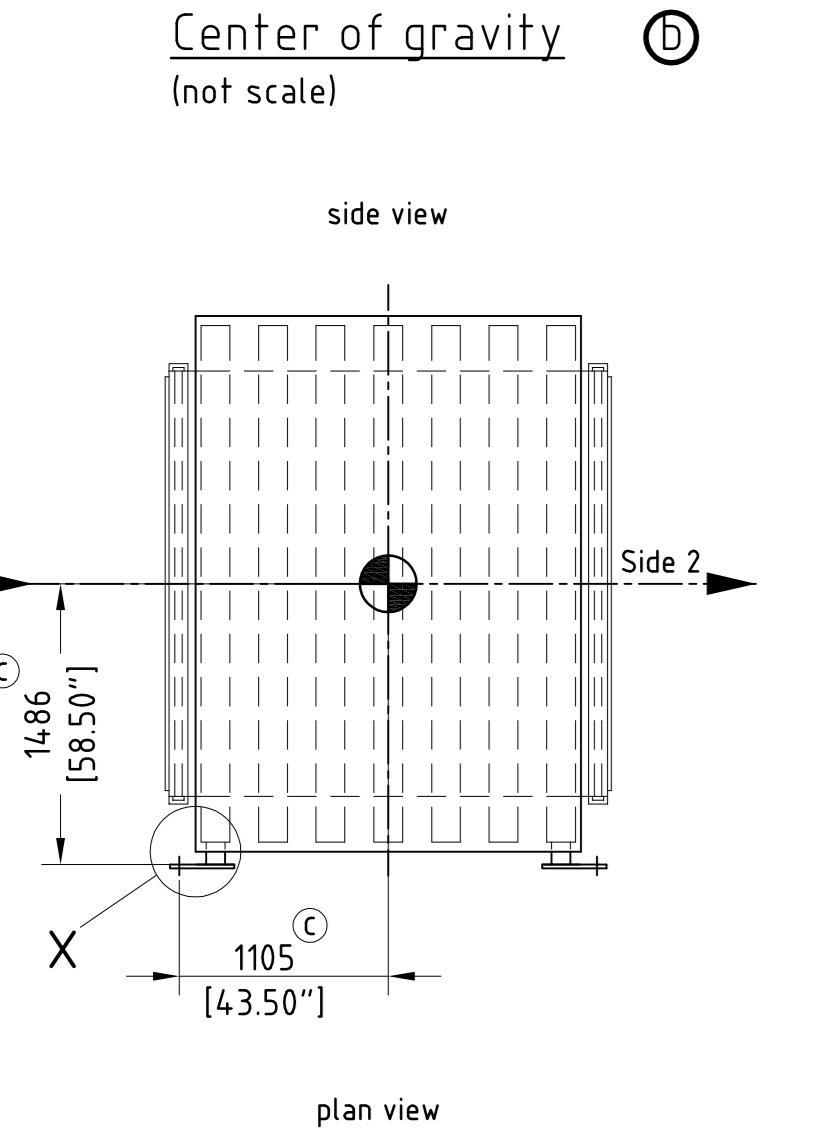
- Electric installations**
1. Power supply cable free length 3m.
 2. Fuse and/or disconnection of power according to DIN 57 750-part 1, VDE 09750-part 1
 3. Illumination and electrical socket in the service compartment has to be supplied by the customer.

Aeration of service compartment for heat dissipation
 The temperature in the service compartment should not exceed 40°C. When the hot air rising from the equipment cannot leave the space above the sterilizer (due to walls and ceiling), there must be some means of ventilation (incoming and outgoing) foreseen by the customer. The average amount of heat to be removed is about 8.0 kW.

Carry in dimensions approx.	Weight approx.
Length: 2600 mm / 102.50"	Transport weight: 6700 kg / 14740 lbs
Width: 1650 mm / 65.00"	Operating weight: 7900 kg / 17380 lbs
Height: 3000 mm / 118.25"	Hydr. test weight: 12500 kg / 27500 lbs



Area for preparation of utility connection. Height approx. 3000mm (118.11"). Pipe section between utility connection point and sterilizer to be made upon installation by customer. Piping on sterilizer will terminate after the last component.



Note for seismic anchoring
 The chamber feeds are designed for seismic anchoring the chamber to the floor. The holes are slotted to allow the chamber to move due to thermal expansion. For installation please use M12 (Hilti) segment anchor bolt (not in scope of delivery).

Approved for construction and production as noted

Sign: John Brauer Date: 8 / 7 / 08

Pos.	Qty.	Description	Material	Remarks	Part number/Drawing number
5	1	electrical control cabinet 800x400x1800	S1.37	/	carbon steel paint
4	1	BioSeal	1.4301	/	/
3	1	Additional panelling	1.4301	/	/
2	1	Vacuum pump 18.0 kW	/	Speck V430	/
1	1	Steam sterilizer 21-9-21HS2	/	LST	/

The copyright on this drawing and all enclosures is reserved to Sauter AG at any time. This documentation is personal and entrusted to the consignee. Do not copy this drawing or parts thereof without prior written approval by Sauter AG. Also it is not allowed to make it available to or to hand it over to third parties.

Project:	Replacement for:	Format:	Scale:	1:20, 1:15
		A0	drawn by:	05.05.2008 RHO
			checked:	05.05.2008 AKU
			revised:	06.10.2008 MHA
			checked:	06.10.2008 AKU

Installation & preparation drawing
 LST 21-9-21 HS2 6050

c	dimensions center of gravity	06.10.2008	MHA
b	Detail y & z, center of gravity	13.08.2008	OBR
a	GU / A	27.05.2008	RHO
Index	Description	Date	Drawn by